

S1

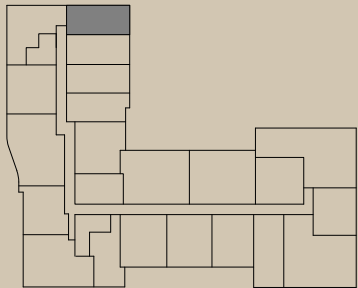
STUDIO / 1 BATH
707 SQ. FT.

ADELINE
LUXURY LIVING

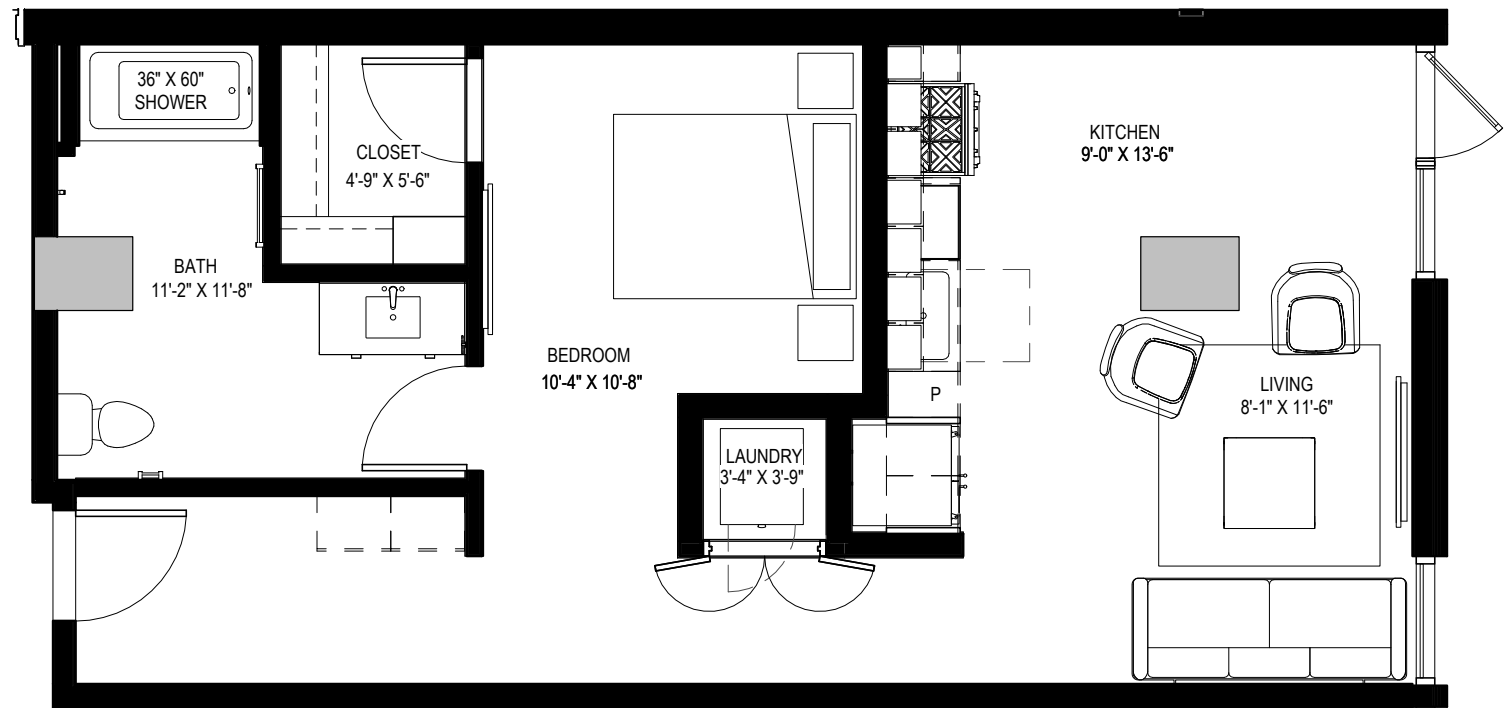
APARTMENT FEATURES

- Floor-to-ceiling windows frame skyline and mountain views
- Quartz counter tops and stainless steel appliances with chef-inspired gas range
- European-style custom cabinetry
- Large walk-in closets with custom wood shelving*
- Wood style flooring throughout
- Contemporary lighting and ceiling fans
- Full size washer and dryer in all residences
- Private patios or balconies with modern, glass railing*

*In select residences



LEVEL 2



All dimensions and square footage are approximate and are subject to change. Illustrations are artist's conception and not reproductions of original plans. Please consult Community Sales Manager for details. 11.01.2020

S2.1

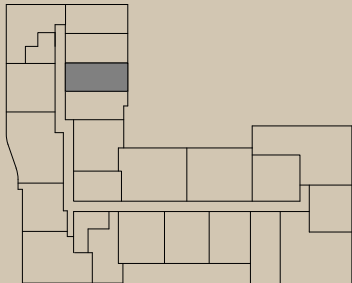
STUDIO / 1 BATH
674 SQ. FT.

ADELINE
LUXURY LIVING

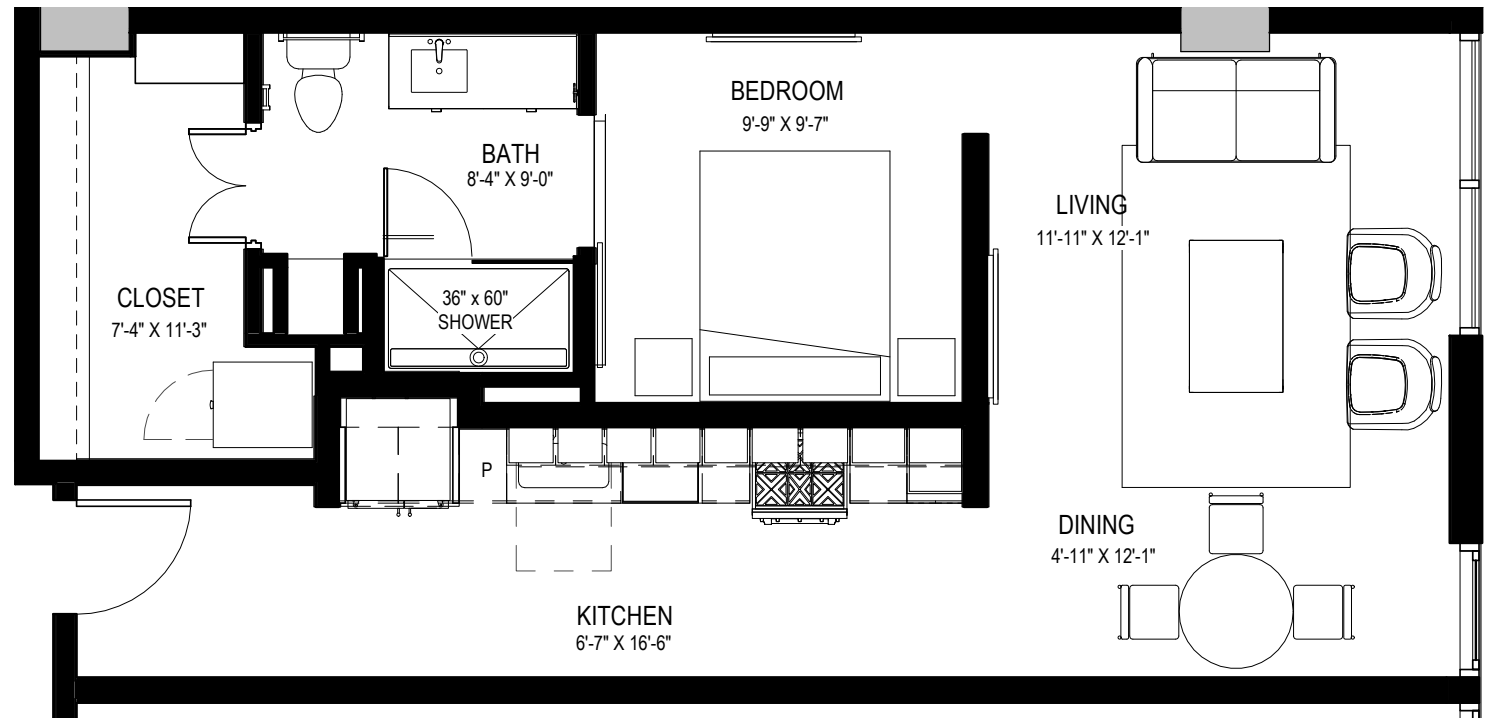
APARTMENT FEATURES

- Floor-to-ceiling windows frame skyline and mountain views
- Quartz counter tops and stainless steel appliances with chef-inspired gas range
- European-style custom cabinetry
- Large walk-in closets with custom wood shelving*
- Wood style flooring throughout
- Contemporary lighting and ceiling fans
- Full size washer and dryer in all residences
- Private patios or balconies with modern, glass railing*

*In select residences



LEVELS 2 THRU 10



All dimensions and square footage are approximate and are subject to change. Illustrations are artist's conception and not reproductions of original plans. Please consult Community Sales Manager for details. 11.01.2020

S2.2

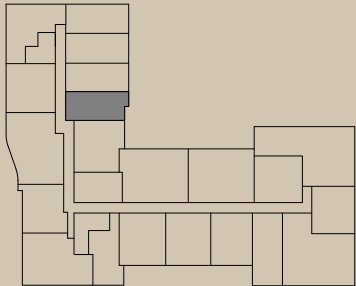
STUDIO / 1 BATH
683 SQ. FT.

ADELINE
LUXURY LIVING

APARTMENT FEATURES

- Floor-to-ceiling windows frame skyline and mountain views
- Quartz counter tops and stainless steel appliances with chef-inspired gas range
- European-style custom cabinetry
- Large walk-in closets with custom wood shelving*
- Wood style flooring throughout
- Contemporary lighting and ceiling fans
- Full size washer and dryer in all residences
- Private patios or balconies with modern, glass railing*

*In select residences



LEVELS 2 THRU 10



All dimensions and square footage are approximate and are subject to change. Illustrations are artist's conception and not reproductions of original plans. Please consult Community Sales Manager for details. 11.01.2020

S3

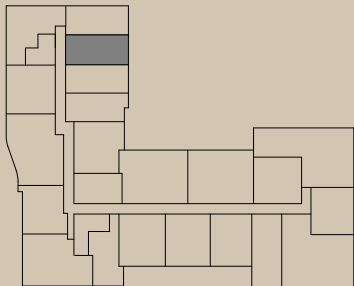
STUDIO / 1 BATH
708 SQ. FT.

ADELINE
LUXURY LIVING

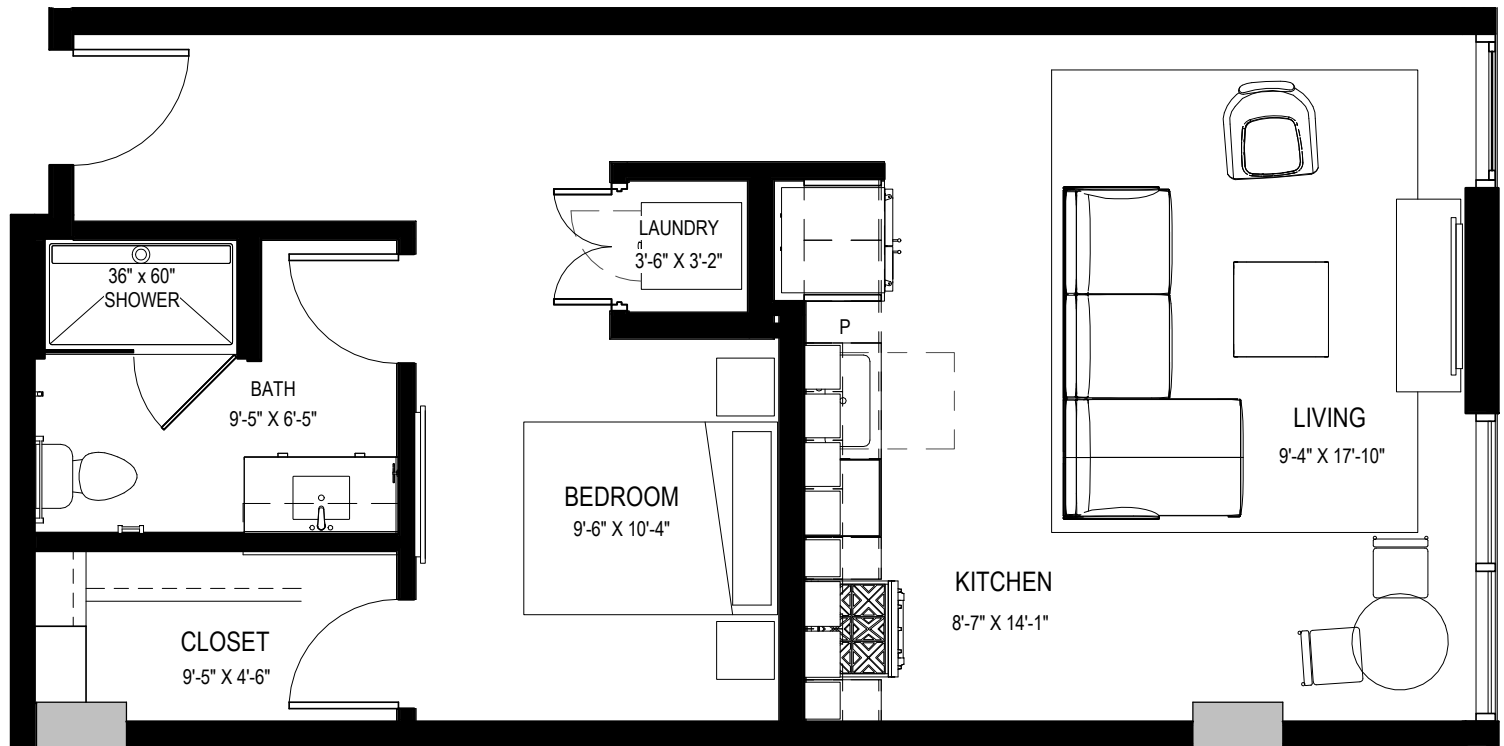
APARTMENT FEATURES

- Floor-to-ceiling windows frame skyline and mountain views
- Quartz counter tops and stainless steel appliances with chef-inspired gas range
- European-style custom cabinetry
- Large walk-in closets with custom wood shelving*
- Wood style flooring throughout
- Contemporary lighting and ceiling fans
- Full size washer and dryer in all residences
- Private patios or balconies with modern, glass railing*

*In select residences



LEVELS 2 THRU 10



All dimensions and square footage are approximate and are subject to change. Illustrations are artist's conception and not reproductions of original plans. Please consult Community Sales Manager for details. 11.01.2020

S4

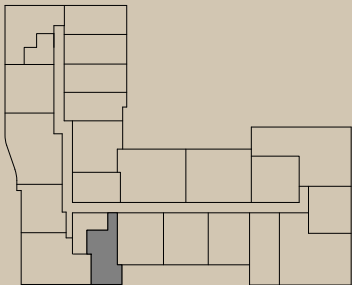
STUDIO / 1 BATH
718 SQ. FT.

ADELINE
LUXURY LIVING

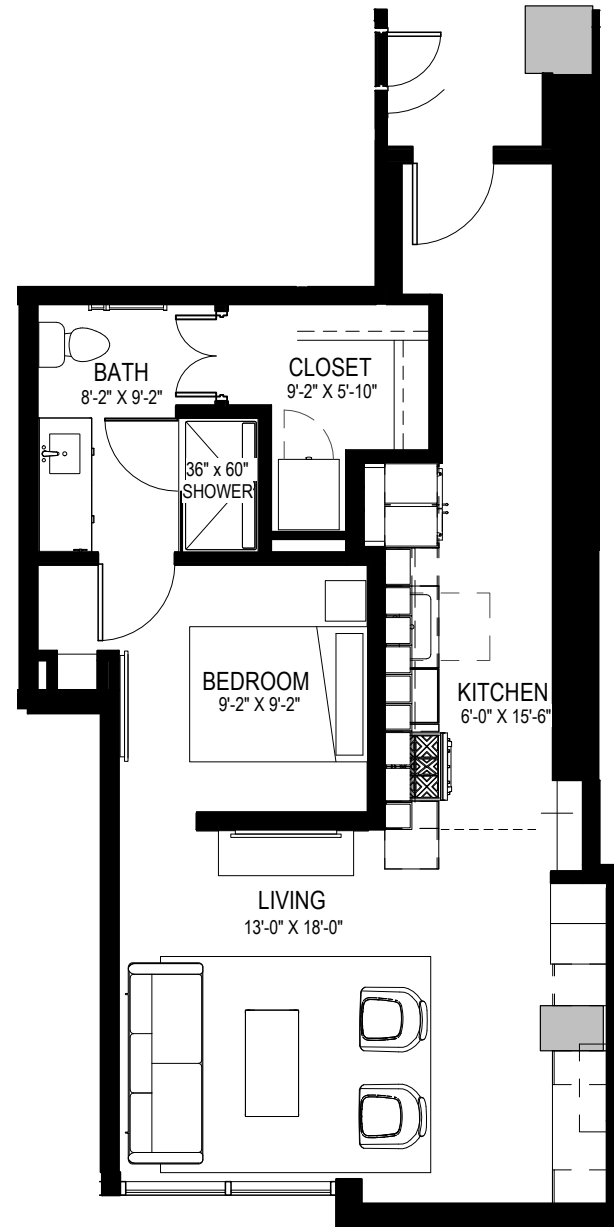
APARTMENT FEATURES

- Floor-to-ceiling windows frame skyline and mountain views
- Quartz counter tops and stainless steel appliances with chef-inspired gas range
- European-style custom cabinetry
- Large walk-in closets with custom wood shelving*
- Wood style flooring throughout
- Contemporary lighting and ceiling fans
- Full size washer and dryer in all residences
- Private patios or balconies with modern, glass railing*

*In select residences



LEVELS 3 THRU 25



All dimensions and square footage are approximate and are subject to change. Illustrations are artist's conception and not reproductions of original plans. Please consult Community Sales Manager for details. 11.01.2020

S5

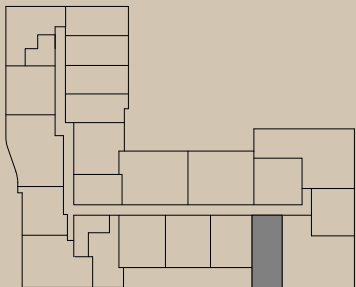
STUDIO / 1 BATH
803 SQ. FT.

ADELINE
LUXURY LIVING

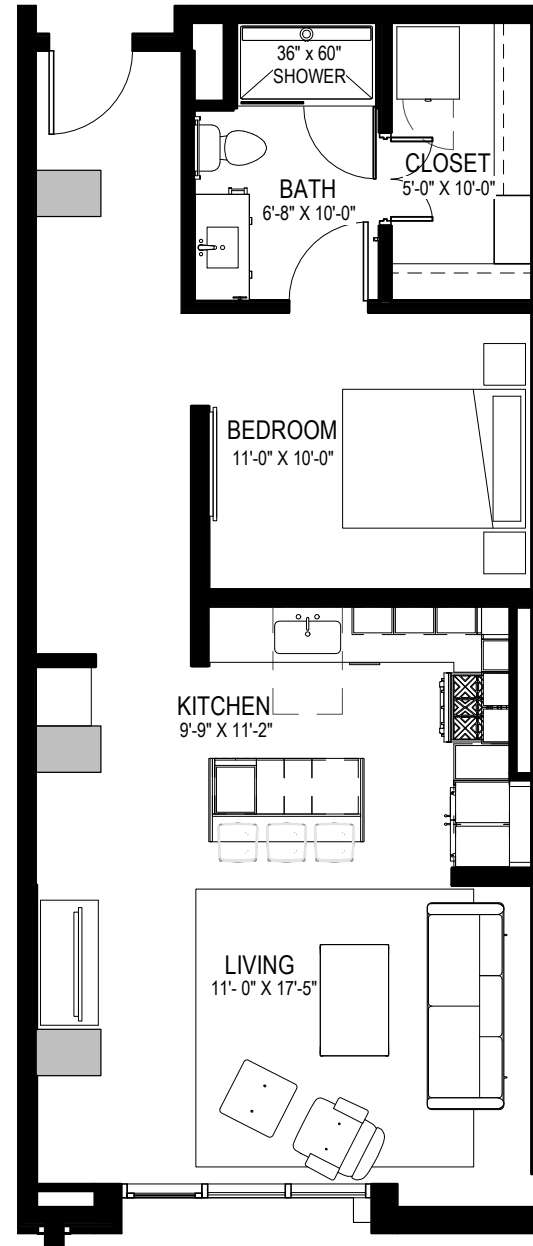
APARTMENT FEATURES

- Floor-to-ceiling windows frame skyline and mountain views
- Quartz counter tops and stainless steel appliances with chef-inspired gas range
- European-style custom cabinetry
- Large walk-in closets with custom wood shelving*
- Wood style flooring throughout
- Contemporary lighting and ceiling fans
- Full size washer and dryer in all residences
- Private patios or balconies with modern, glass railing*

*In select residences



LEVELS 3 THRU 25

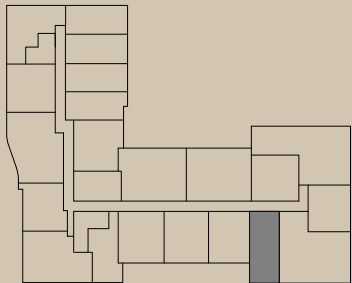


All dimensions and square footage are approximate and are subject to change. Illustrations are artist's conception and not reproductions of original plans. Please consult Community Sales Manager for details. 11.01.2020

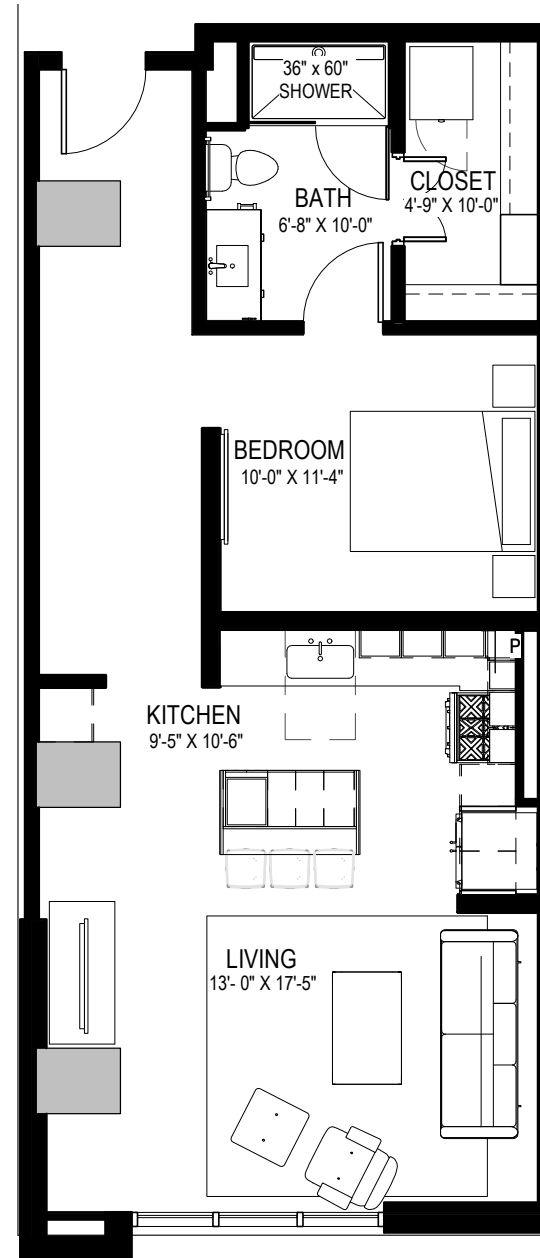
APARTMENT FEATURES

- Floor-to-ceiling windows frame skyline and mountain views
- Quartz counter tops and stainless steel appliances with chef-inspired gas range
- European-style custom cabinetry
- Large walk-in closets with custom wood shelving*
- Wood style flooring throughout
- Contemporary lighting and ceiling fans
- Full size washer and dryer in all residences
- Private patios or balconies with modern, glass railing*

*In select residences



LEVEL 2



A1

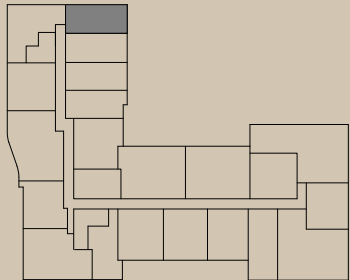
1 BED / 1 BATH
723 SQ. FT.

ADELINE
LUXURY LIVING

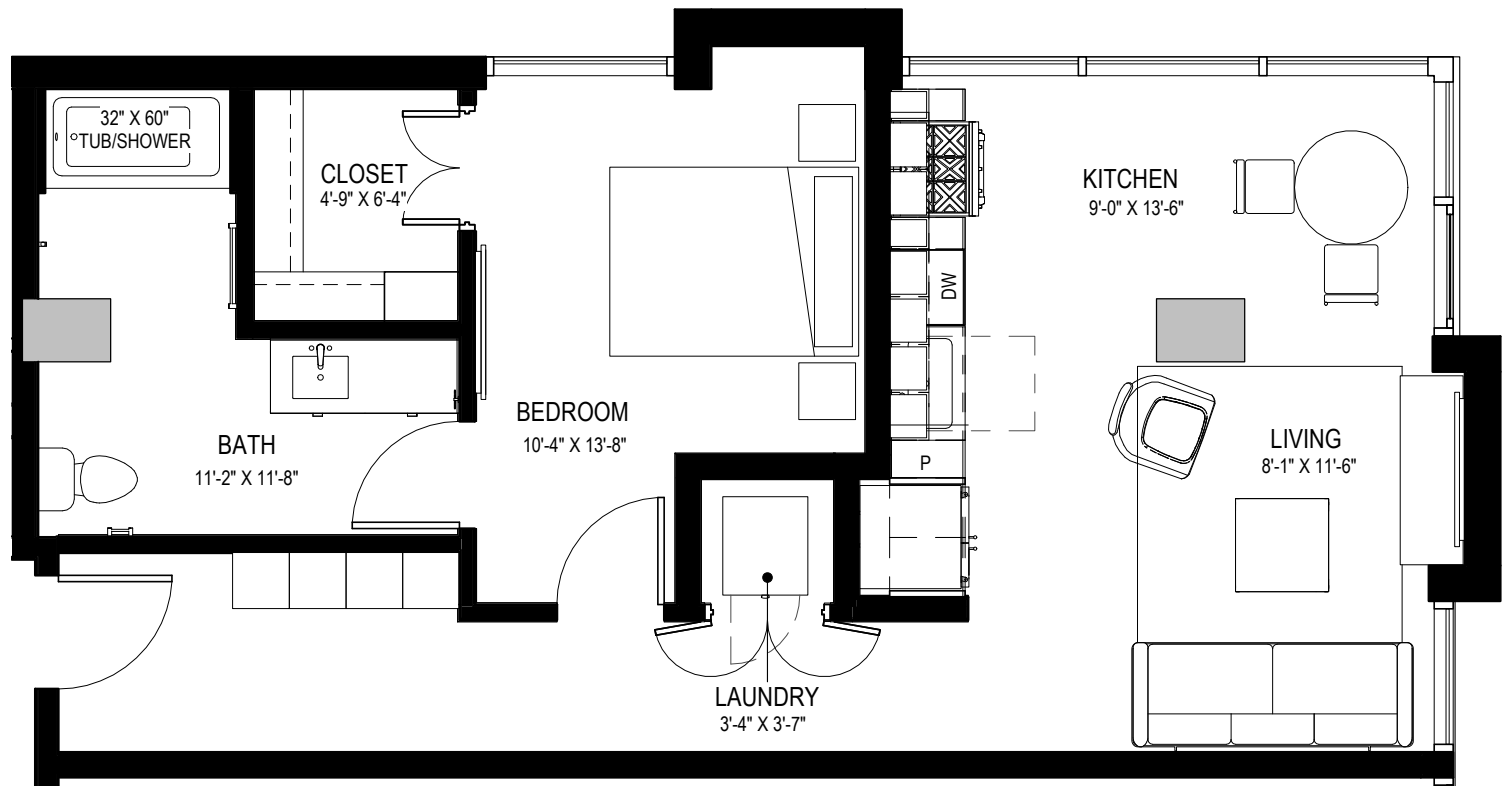
APARTMENT FEATURES

- Floor-to-ceiling windows frame skyline and mountain views
- Quartz counter tops and stainless steel appliances with chef-inspired gas range
- European-style custom cabinetry
- Large walk-in closets with custom wood shelving*
- Wood style flooring throughout
- Contemporary lighting and ceiling fans
- Full size washer and dryer in all residences
- Private patios or balconies with modern, glass railing*

*In select residences



LEVELS 3 THRU 10



All dimensions and square footage are approximate and are subject to change. Illustrations are artist's conception and not reproductions of original plans. Please consult Community Sales Manager for details. 11.01.2020

A2

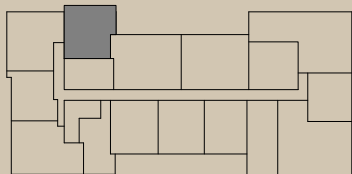
1 BED / 1 BATH
744 SQ. FT.

ADELINE
LUXURY LIVING

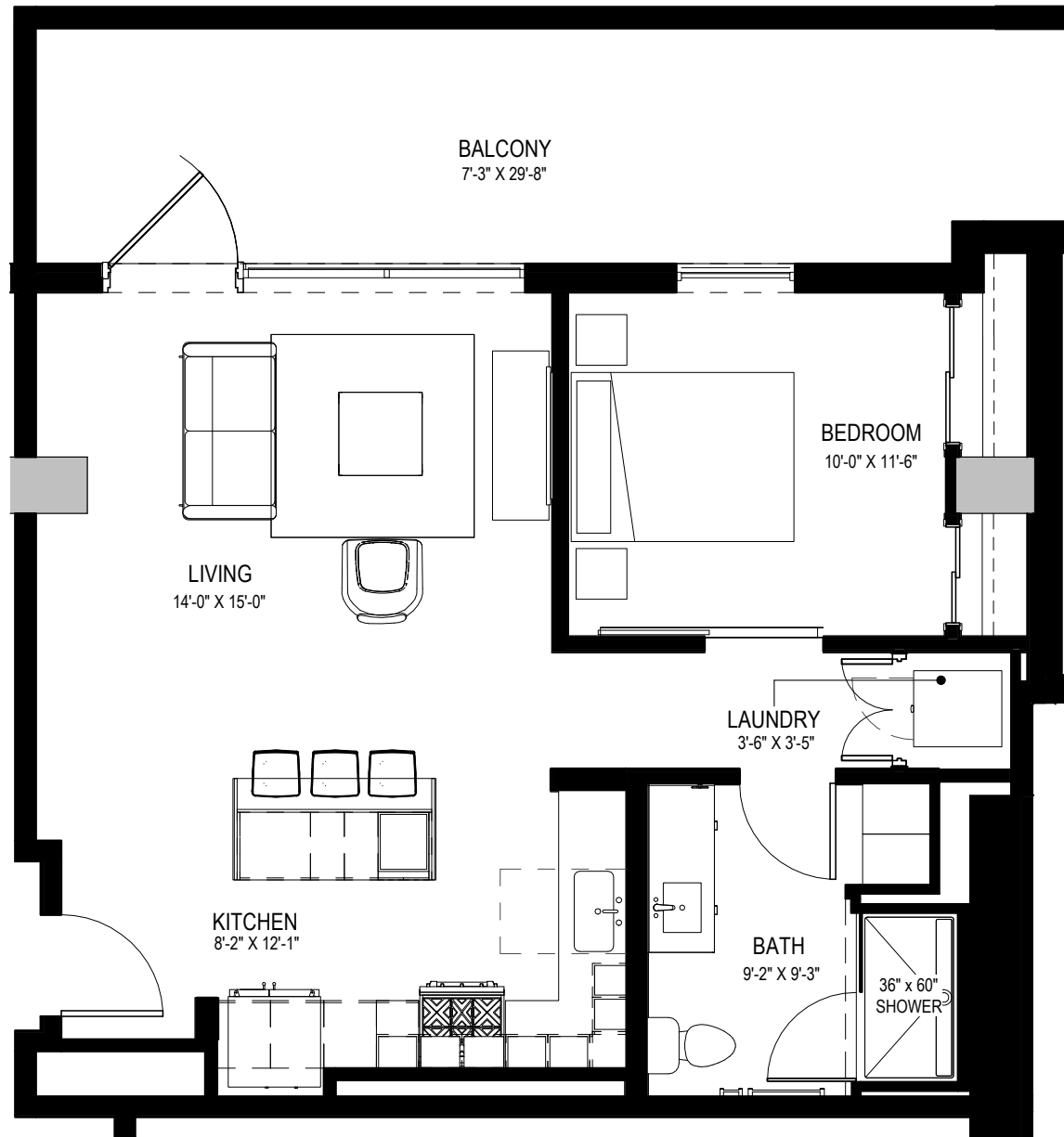
APARTMENT FEATURES

- Floor-to-ceiling windows frame skyline and mountain views
- Quartz counter tops and stainless steel appliances with chef-inspired gas range
- European-style custom cabinetry
- Large walk-in closets with custom wood shelving*
- Wood style flooring throughout
- Contemporary lighting and ceiling fans
- Full size washer and dryer in all residences
- Private patios or balconies with modern, glass railing*

*In select residences



LEVELS 11 THRU 25



All dimensions and square footage are approximate and are subject to change. Illustrations are artist's conception and not reproductions of original plans. Please consult Community Sales Manager for details. 11.01.2020

A3

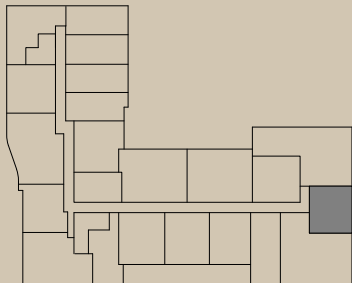
1 BED / 1 BATH
765 SQ. FT.

ADELINE
LUXURY LIVING

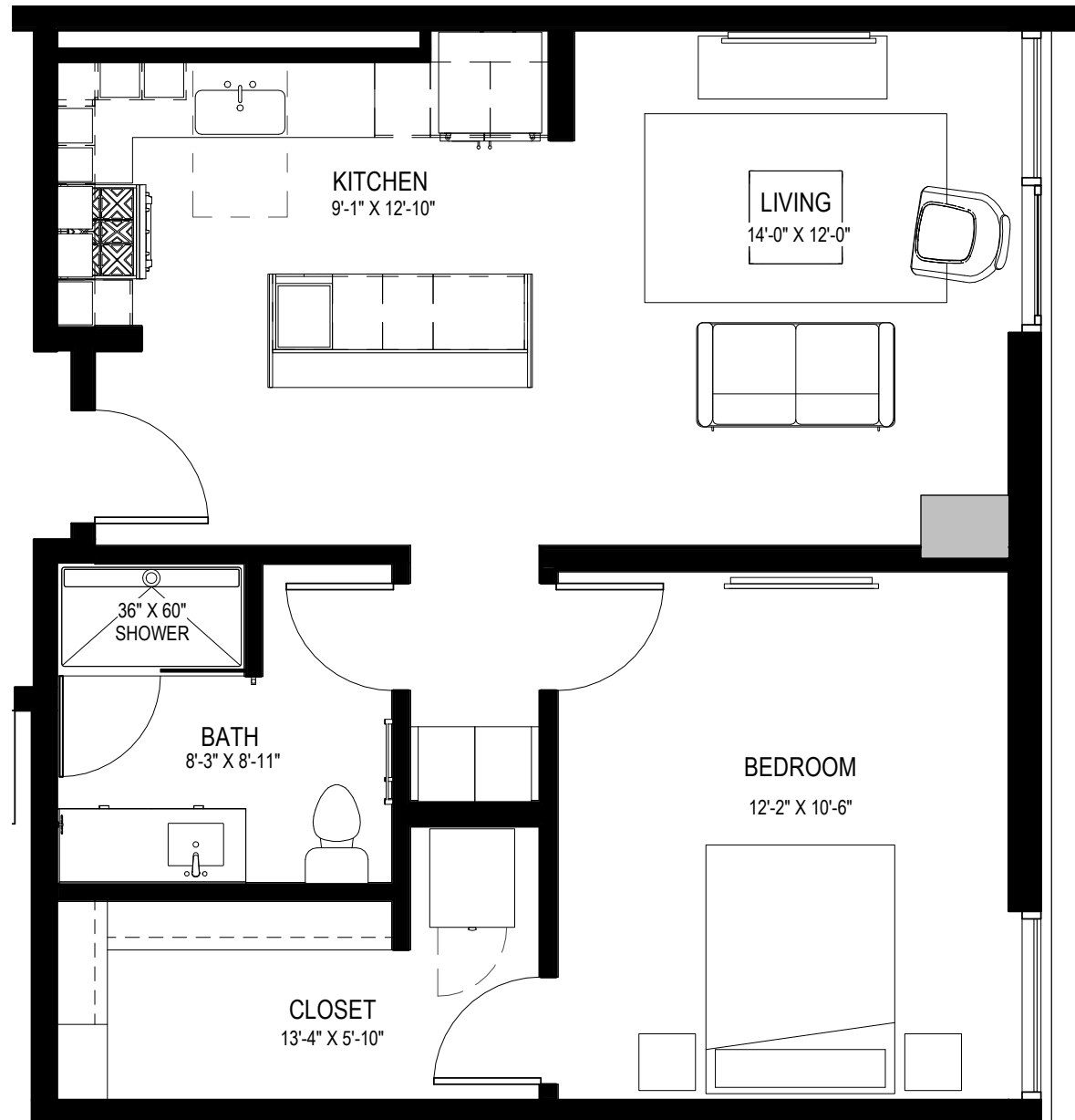
APARTMENT FEATURES

- Floor-to-ceiling windows frame skyline and mountain views
- Quartz counter tops and stainless steel appliances with chef-inspired gas range
- European-style custom cabinetry
- Large walk-in closets with custom wood shelving*
- Wood style flooring throughout
- Contemporary lighting and ceiling fans
- Full size washer and dryer in all residences
- Private patios or balconies with modern, glass railing*

*In select residences



LEVELS 3 THRU 25



All dimensions and square footage are approximate and are subject to change. Illustrations are artist's conception and not reproductions of original plans. Please consult Community Sales Manager for details. 11.01.2020

A4.1

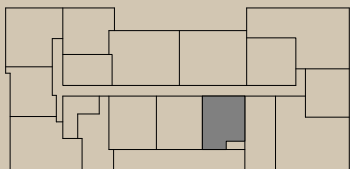
1 BED / 1 BATH
797 SQ. FT.

ADELINE
LUXURY LIVING

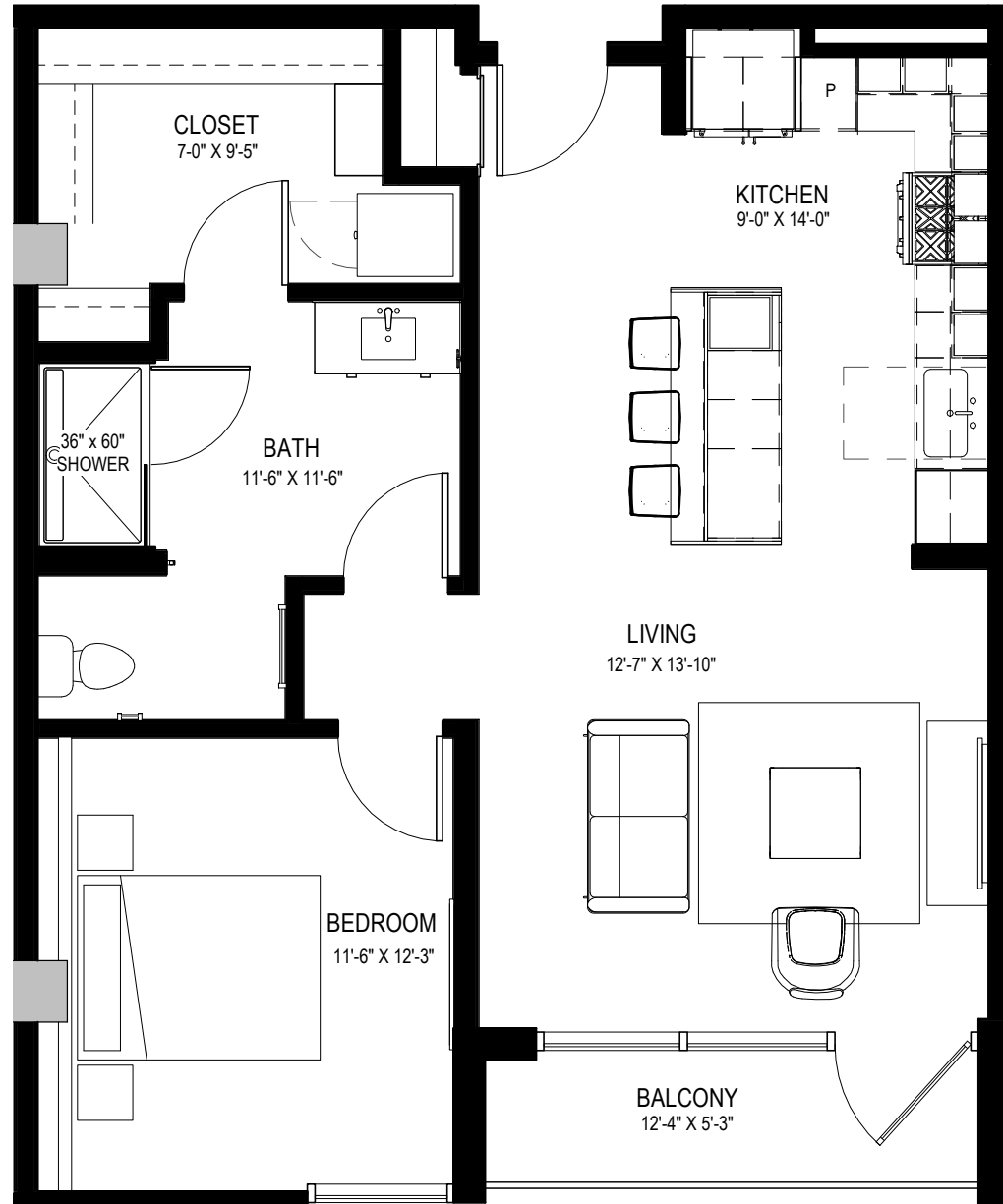
APARTMENT FEATURES

- Floor-to-ceiling windows frame skyline and mountain views
- Quartz counter tops and stainless steel appliances with chef-inspired gas range
- European-style custom cabinetry
- Large walk-in closets with custom wood shelving*
- Wood style flooring throughout
- Contemporary lighting and ceiling fans
- Full size washer and dryer in all residences
- Private patios or balconies with modern, glass railing*

*In select residences



LEVELS 11 THRU 25



All dimensions and square footage are approximate and are subject to change. Illustrations are artist's conception and not reproductions of original plans. Please consult Community Sales Manager for details. 11.01.2020

A4.2

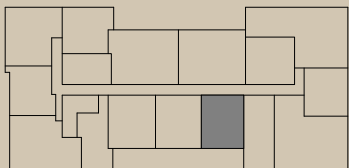
1 BED / 1 BATH
859 SQ. FT.

ADELINE
LUXURY LIVING

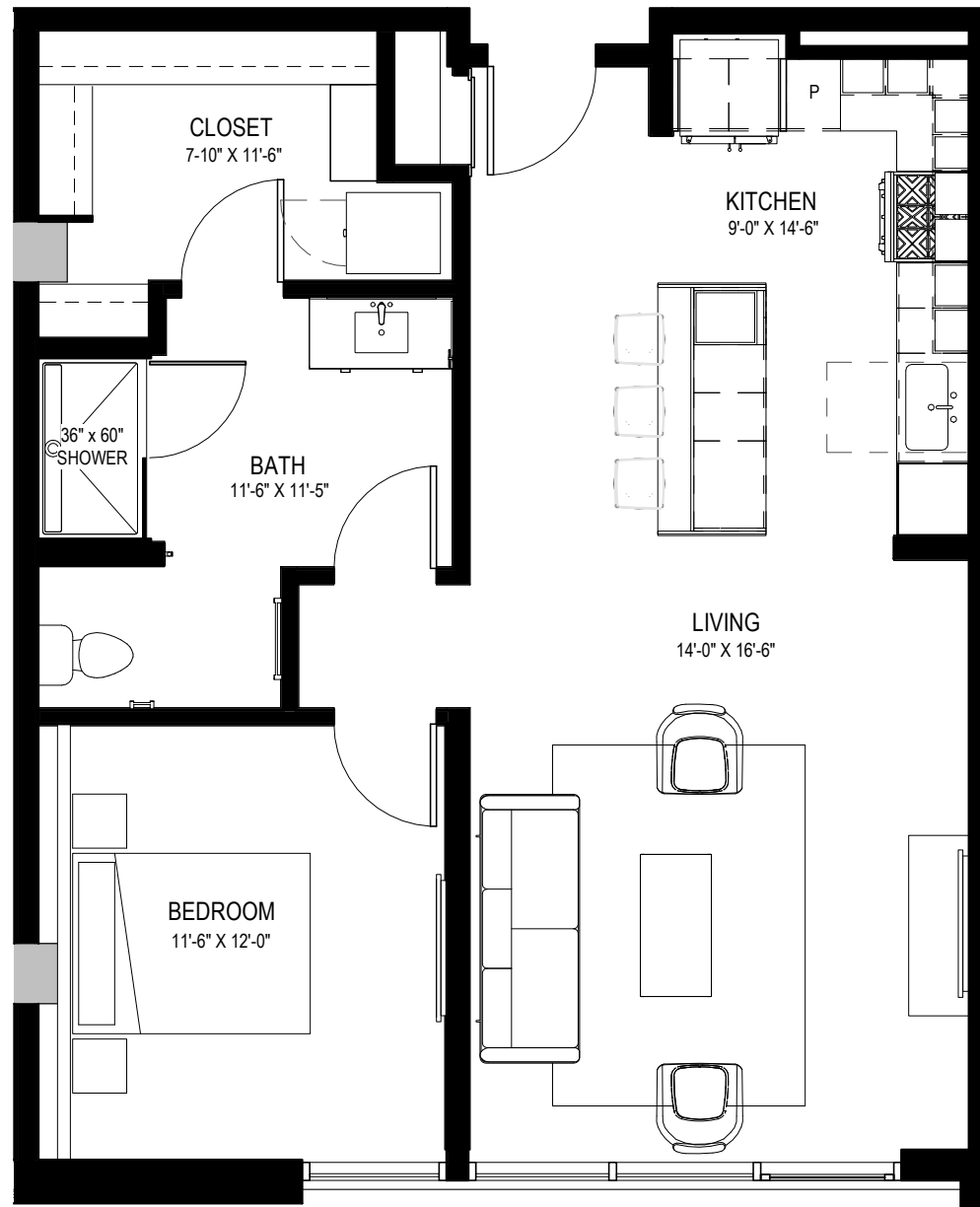
APARTMENT FEATURES

- Floor-to-ceiling windows frame skyline and mountain views
- Quartz counter tops and stainless steel appliances with chef-inspired gas range
- European-style custom cabinetry
- Large walk-in closets with custom wood shelving*
- Wood style flooring throughout
- Contemporary lighting and ceiling fans
- Full size washer and dryer in all residences
- Private patios or balconies with modern, glass railing*

*In select residences



LEVELS 3 THRU 10



All dimensions and square footage are approximate and are subject to change. Illustrations are artist's conception and not reproductions of original plans. Please consult Community Sales Manager for details. 11.01.2020

A5

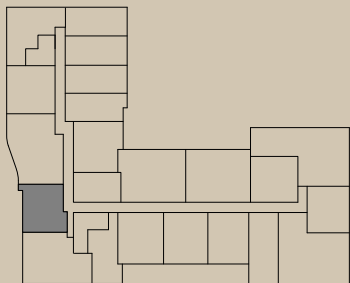
1 BED / 1 BATH
818 SQ. FT.

ADELINE
LUXURY LIVING

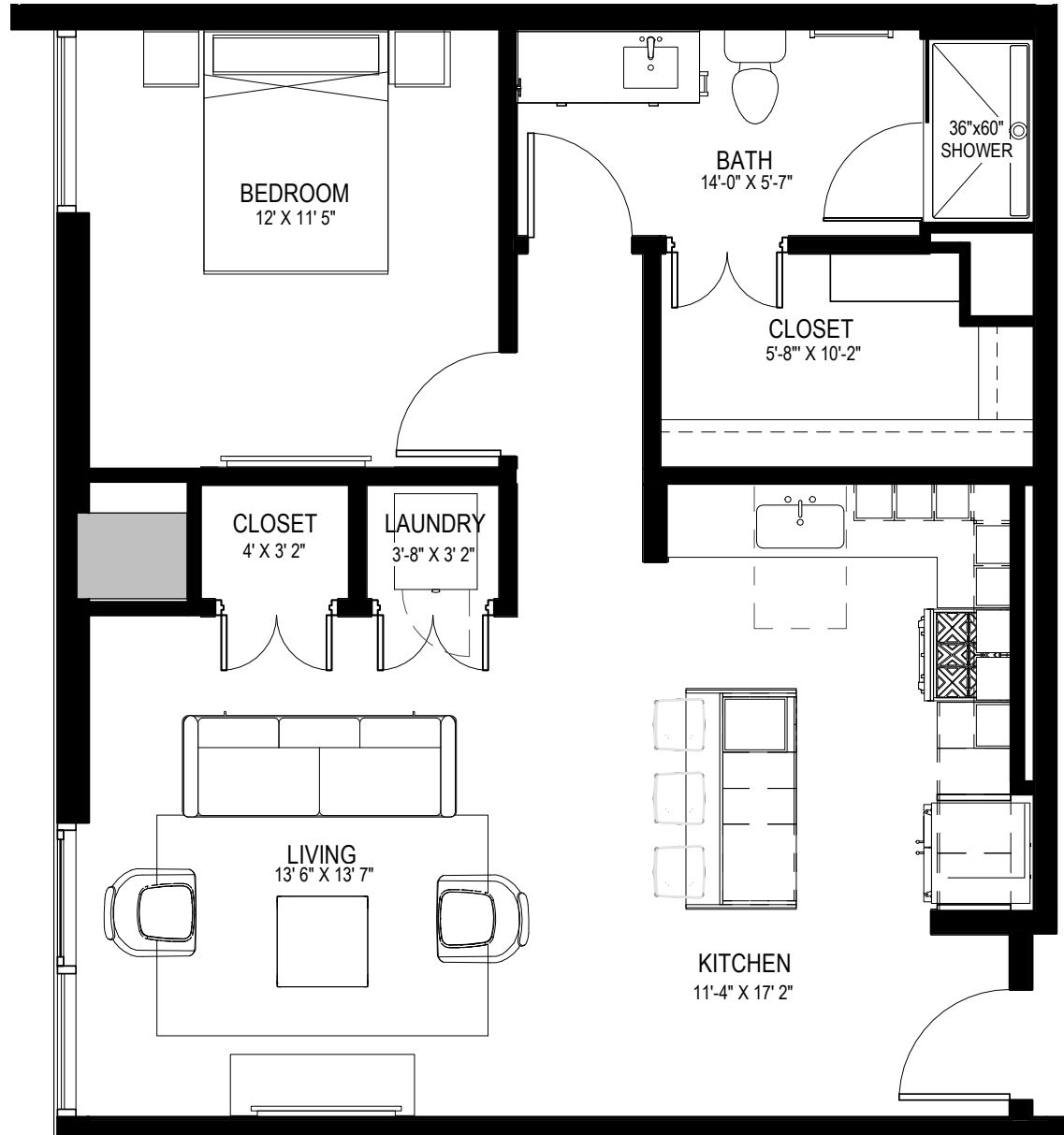
APARTMENT FEATURES

- Floor-to-ceiling windows frame skyline and mountain views
- Quartz counter tops and stainless steel appliances with chef-inspired gas range
- European-style custom cabinetry
- Large walk-in closets with custom wood shelving*
- Wood style flooring throughout
- Contemporary lighting and ceiling fans
- Full size washer and dryer in all residences
- Private patios or balconies with modern, glass railing*

*In select residences



LEVELS 3 THRU 25



All dimensions and square footage are approximate and are subject to change. Illustrations are artist's conception and not reproductions of original plans. Please consult Community Sales Manager for details. 11.01.2020

A6.1

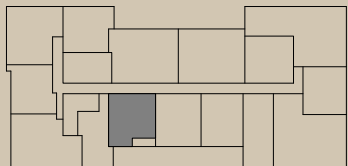
1 BED / 1 BATH
867 SQ. FT.

ADELINE
LUXURY LIVING

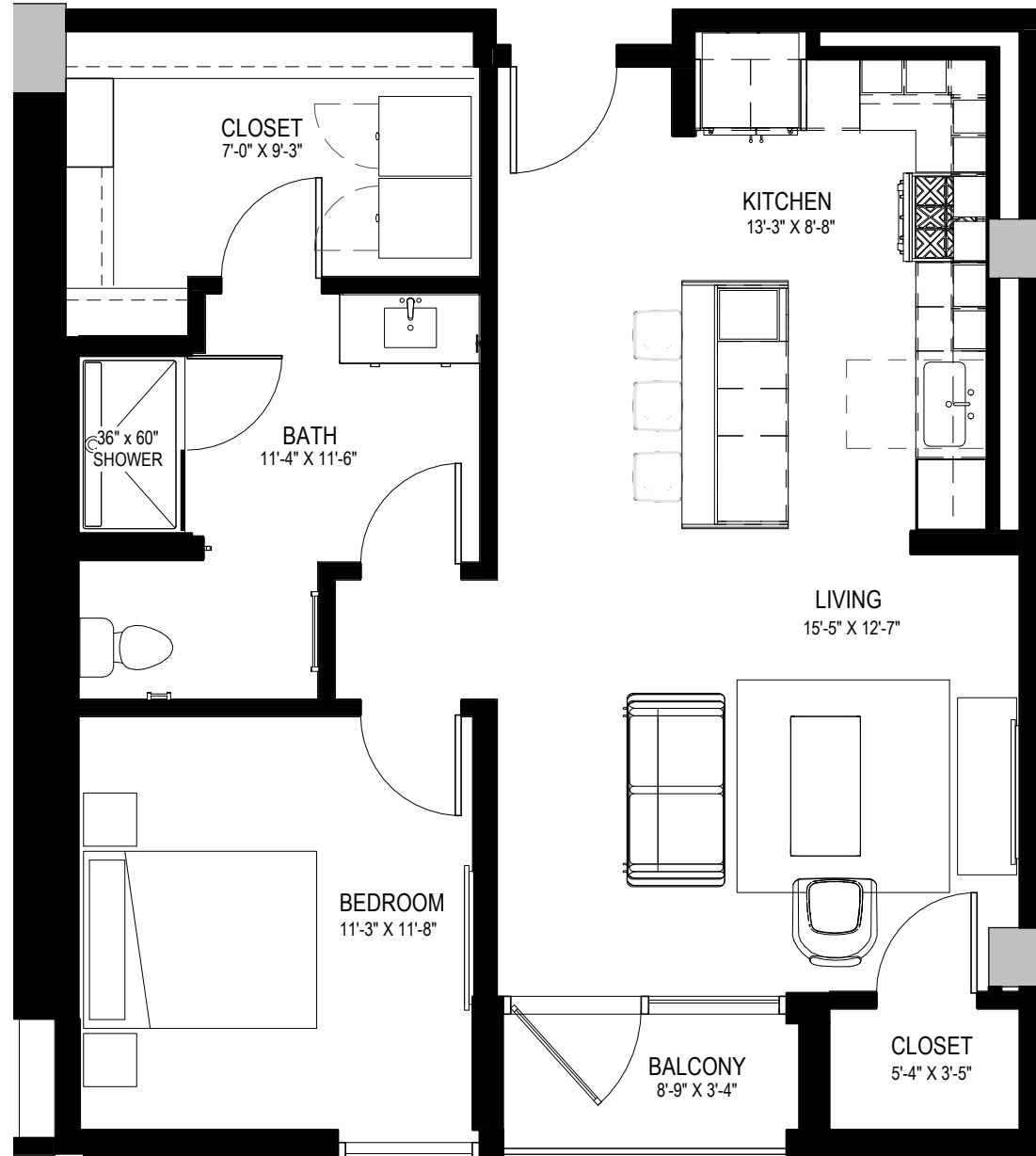
APARTMENT FEATURES

- Floor-to-ceiling windows frame skyline and mountain views
- Quartz counter tops and stainless steel appliances with chef-inspired gas range
- European-style custom cabinetry
- Large walk-in closets with custom wood shelving*
- Wood style flooring throughout
- Contemporary lighting and ceiling fans
- Full size washer and dryer in all residences
- Private patios or balconies with modern, glass railing*

*In select residences



LEVELS 11 THRU 25



All dimensions and square footage are approximate and are subject to change. Illustrations are artist's conception and not reproductions of original plans. Please consult Community Sales Manager for details. 11.01.2020

A6.2

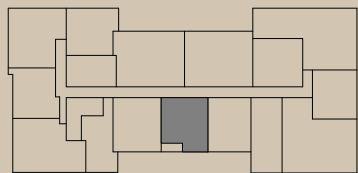
1 BED / 1 BATH
866 SQ. FT.

ADELINE
LUXURY LIVING

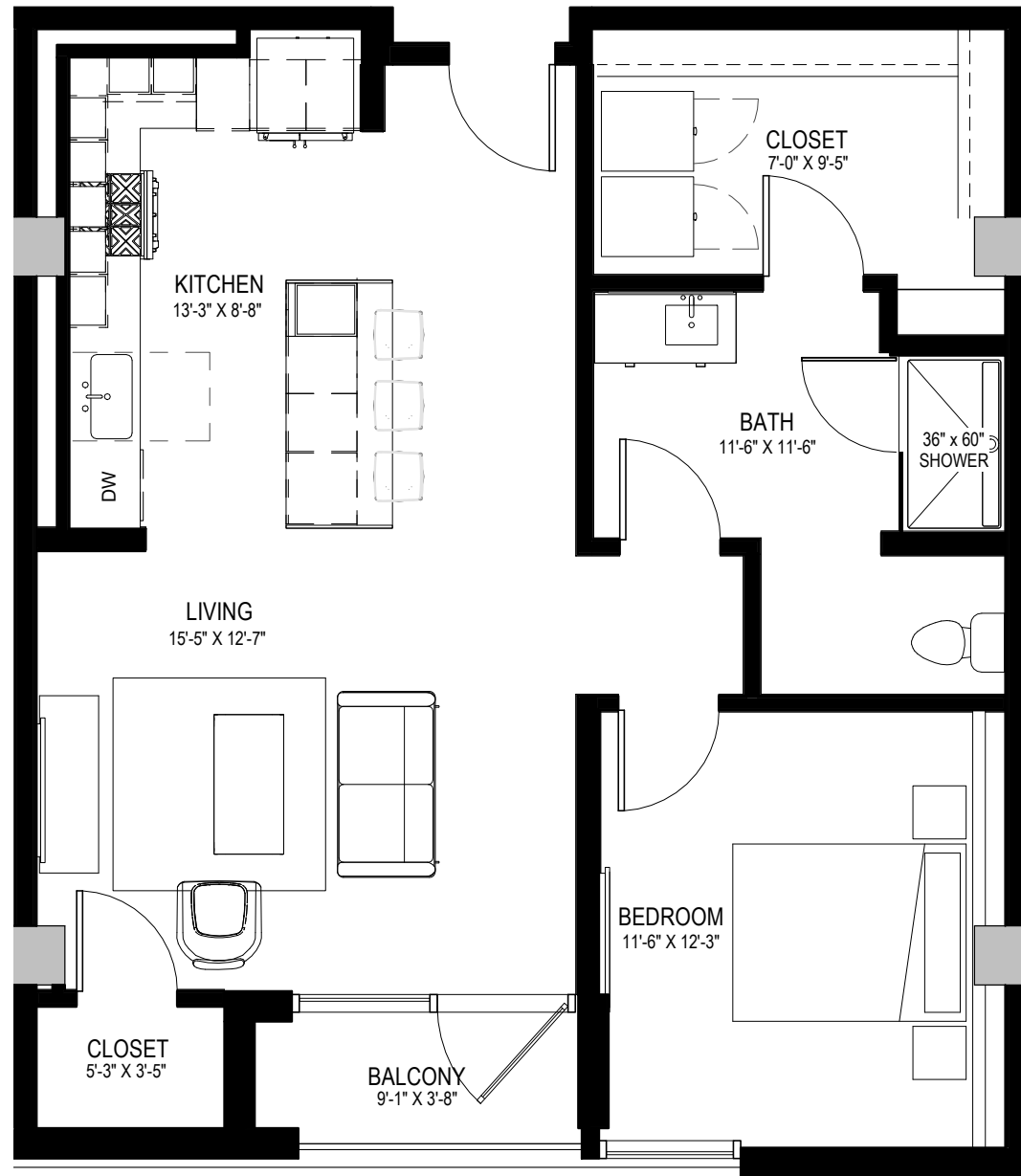
APARTMENT FEATURES

- Floor-to-ceiling windows frame skyline and mountain views
- Quartz counter tops and stainless steel appliances with chef-inspired gas range
- European-style custom cabinetry
- Large walk-in closets with custom wood shelving*
- Wood style flooring throughout
- Contemporary lighting and ceiling fans
- Full size washer and dryer in all residences
- Private patios or balconies with modern, glass railing*

*In select residences



LEVELS 11 THRU 25



All dimensions and square footage are approximate and are subject to change. Illustrations are artist's conception and not reproductions of original plans. Please consult Community Sales Manager for details. 11.01.2020

A6.3

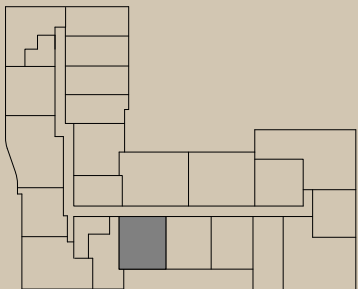
1 BED / 1 BATH
902 SQ. FT.

ADELINE
LUXURY LIVING

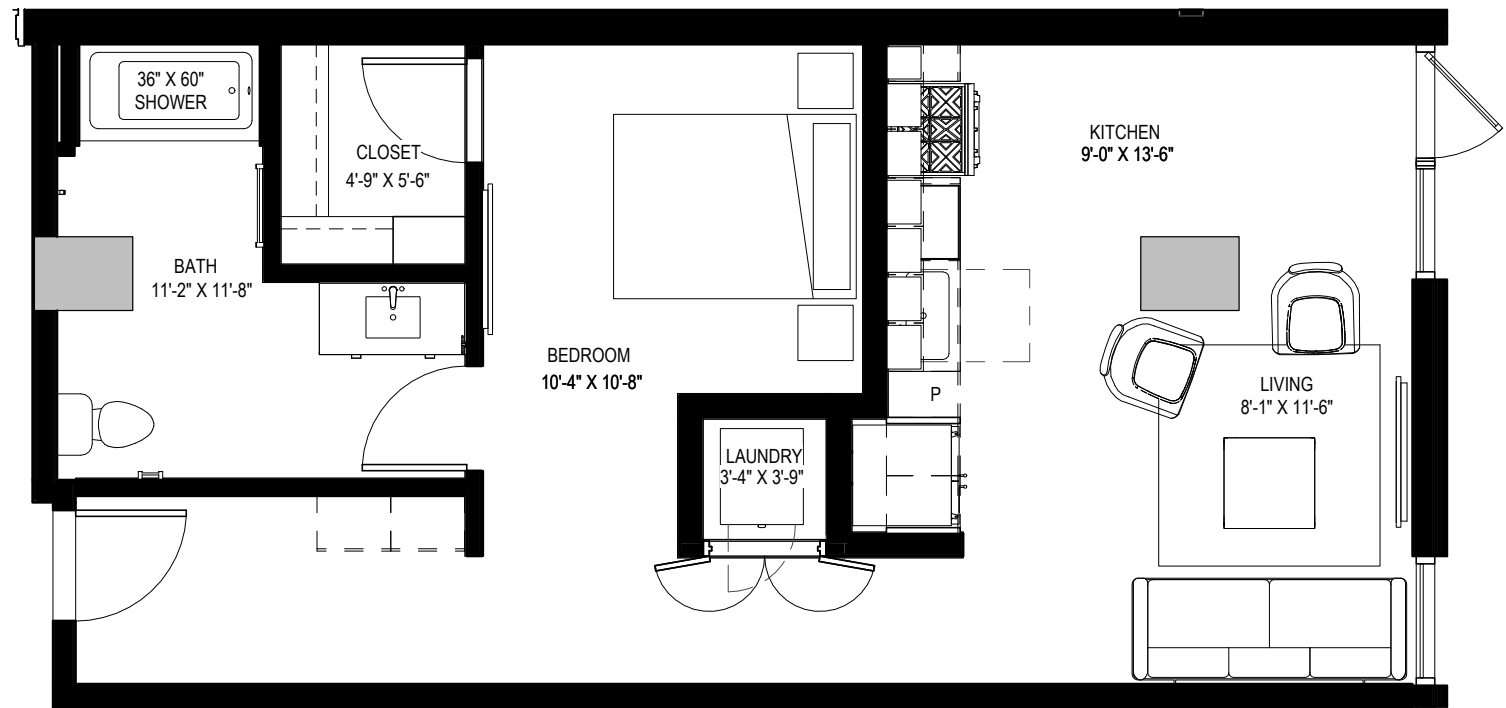
APARTMENT FEATURES

- Floor-to-ceiling windows frame skyline and mountain views
- Quartz counter tops and stainless steel appliances with chef-inspired gas range
- European-style custom cabinetry
- Large walk-in closets with custom wood shelving*
- Wood style flooring throughout
- Contemporary lighting and ceiling fans
- Full size washer and dryer in all residences
- Private patios or balconies with modern, glass railing*

*In select residences



LEVELS 3 THRU 10



All dimensions and square footage are approximate and are subject to change. Illustrations are artist's conception and not reproductions of original plans. Please consult Community Sales Manager for details. 11.01.2020

A6.4

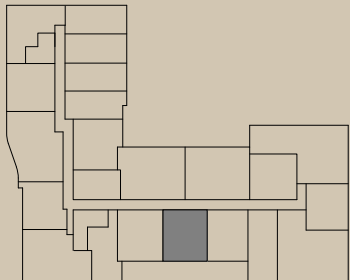
1 BED / 1 BATH
909 SQ. FT.

ADELINE
LUXURY LIVING

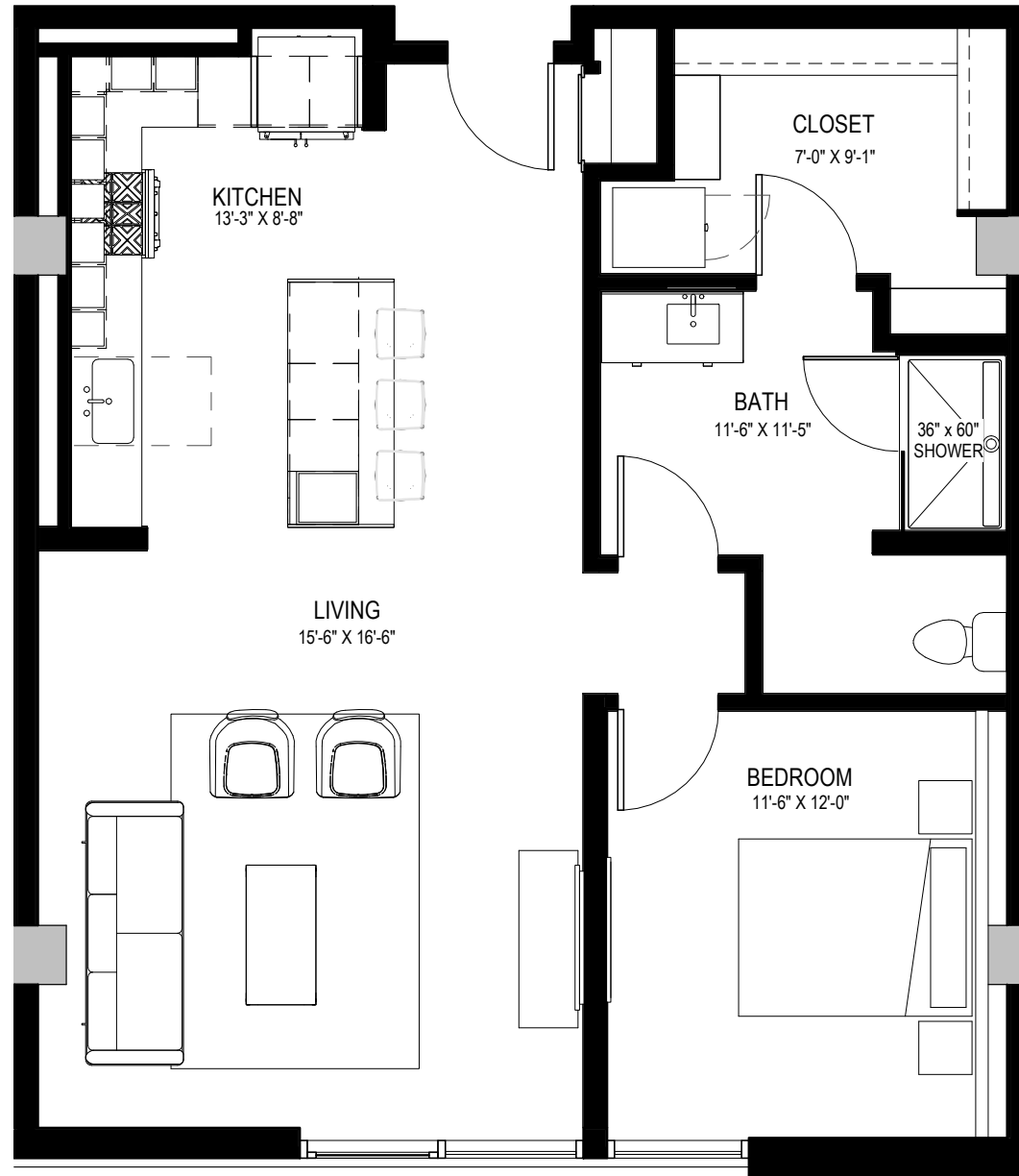
APARTMENT FEATURES

- Floor-to-ceiling windows frame skyline and mountain views
- Quartz counter tops and stainless steel appliances with chef-inspired gas range
- European-style custom cabinetry
- Large walk-in closets with custom wood shelving*
- Wood style flooring throughout
- Contemporary lighting and ceiling fans
- Full size washer and dryer in all residences
- Private patios or balconies with modern, glass railing*

*In select residences



LEVELS 3 THRU 10



All dimensions and square footage are approximate and are subject to change. Illustrations are artist's conception and not reproductions of original plans. Please consult Community Sales Manager for details. 11.01.2020

A7

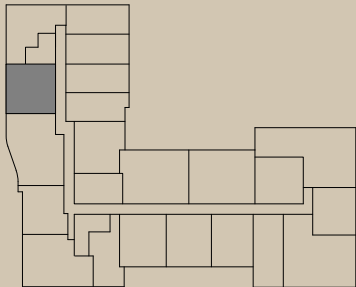
1 BED / 1 BATH
898 SQ. FT.

ADELINE
LUXURY LIVING

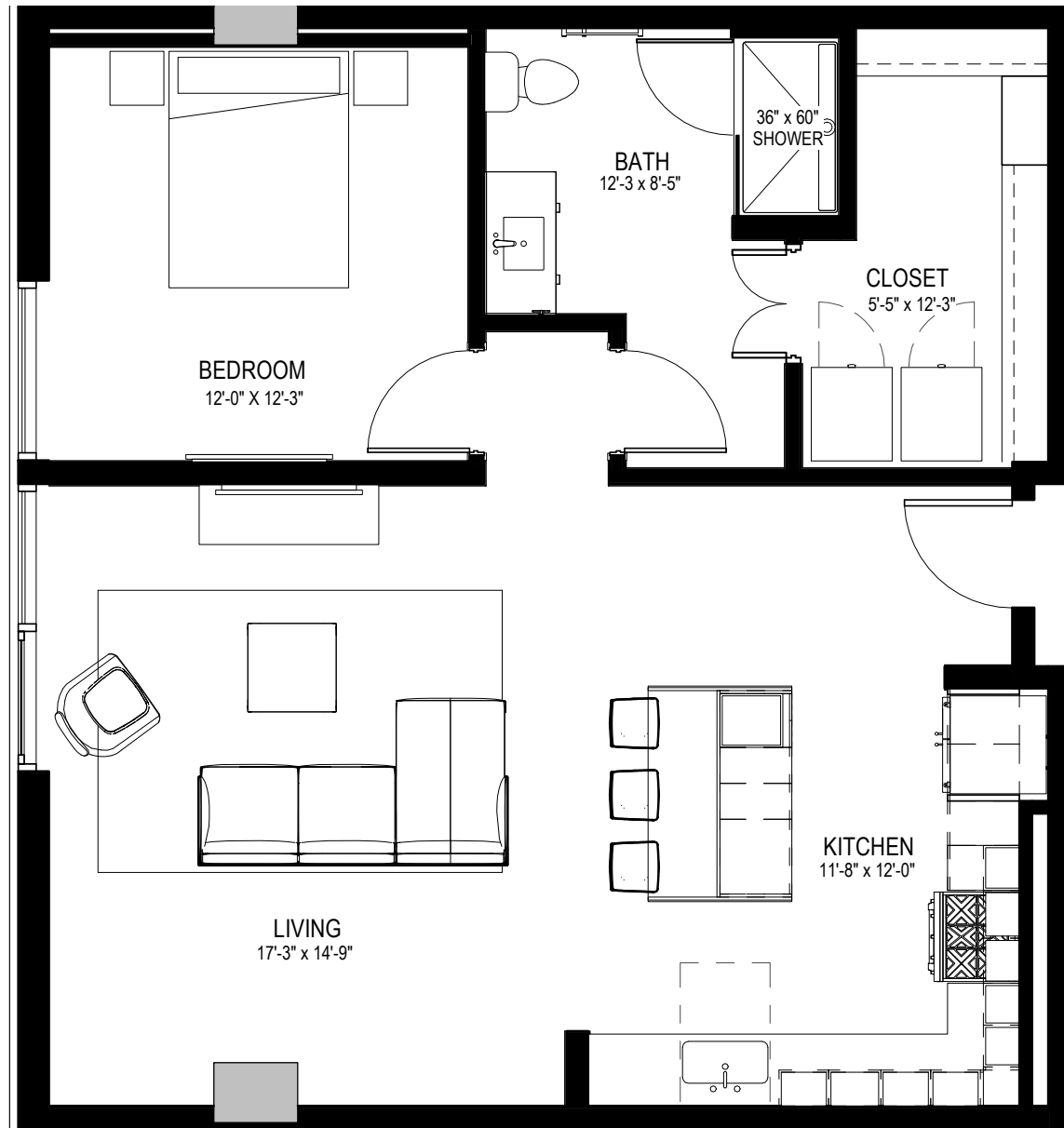
APARTMENT FEATURES

- Floor-to-ceiling windows frame skyline and mountain views
- Quartz counter tops and stainless steel appliances with chef-inspired gas range
- European-style custom cabinetry
- Large walk-in closets with custom wood shelving*
- Wood style flooring throughout
- Contemporary lighting and ceiling fans
- Full size washer and dryer in all residences
- Private patios or balconies with modern, glass railing*

*In select residences



LEVELS 3 THRU 10



All dimensions and square footage are approximate and are subject to change. Illustrations are artist's conception and not reproductions of original plans. Please consult Community Sales Manager for details. 11.01.2020

A8

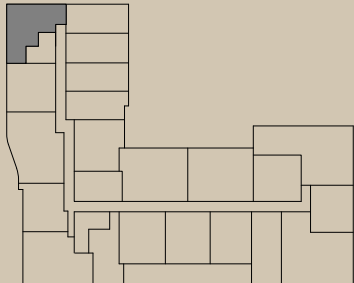
1 BED / 1 BATH
913 SQ. FT.

ADELINE
LUXURY LIVING

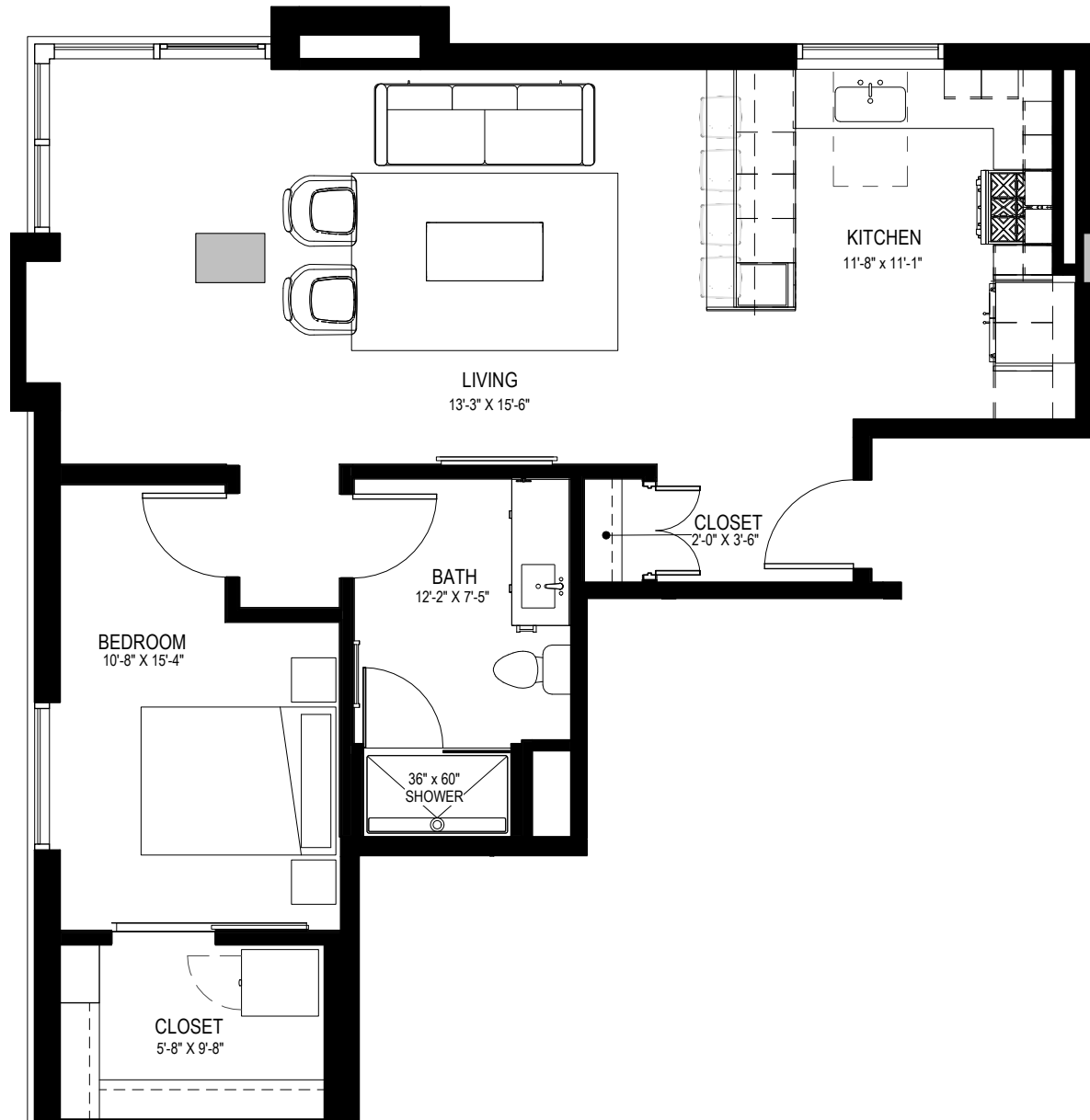
APARTMENT FEATURES

- Floor-to-ceiling windows frame skyline and mountain views
- Quartz counter tops and stainless steel appliances with chef-inspired gas range
- European-style custom cabinetry
- Large walk-in closets with custom wood shelving*
- Wood style flooring throughout
- Contemporary lighting and ceiling fans
- Full size washer and dryer in all residences
- Private patios or balconies with modern, glass railing*

*In select residences



LEVELS 3 THRU 10



All dimensions and square footage are approximate and are subject to change. Illustrations are artist's conception and not reproductions of original plans. Please consult Community Sales Manager for details. 11.01.2020

A9.1

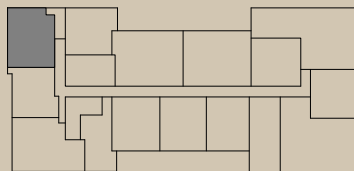
1 BED / 1 BATH
905 SQ. FT.

ADELINE
LUXURY LIVING

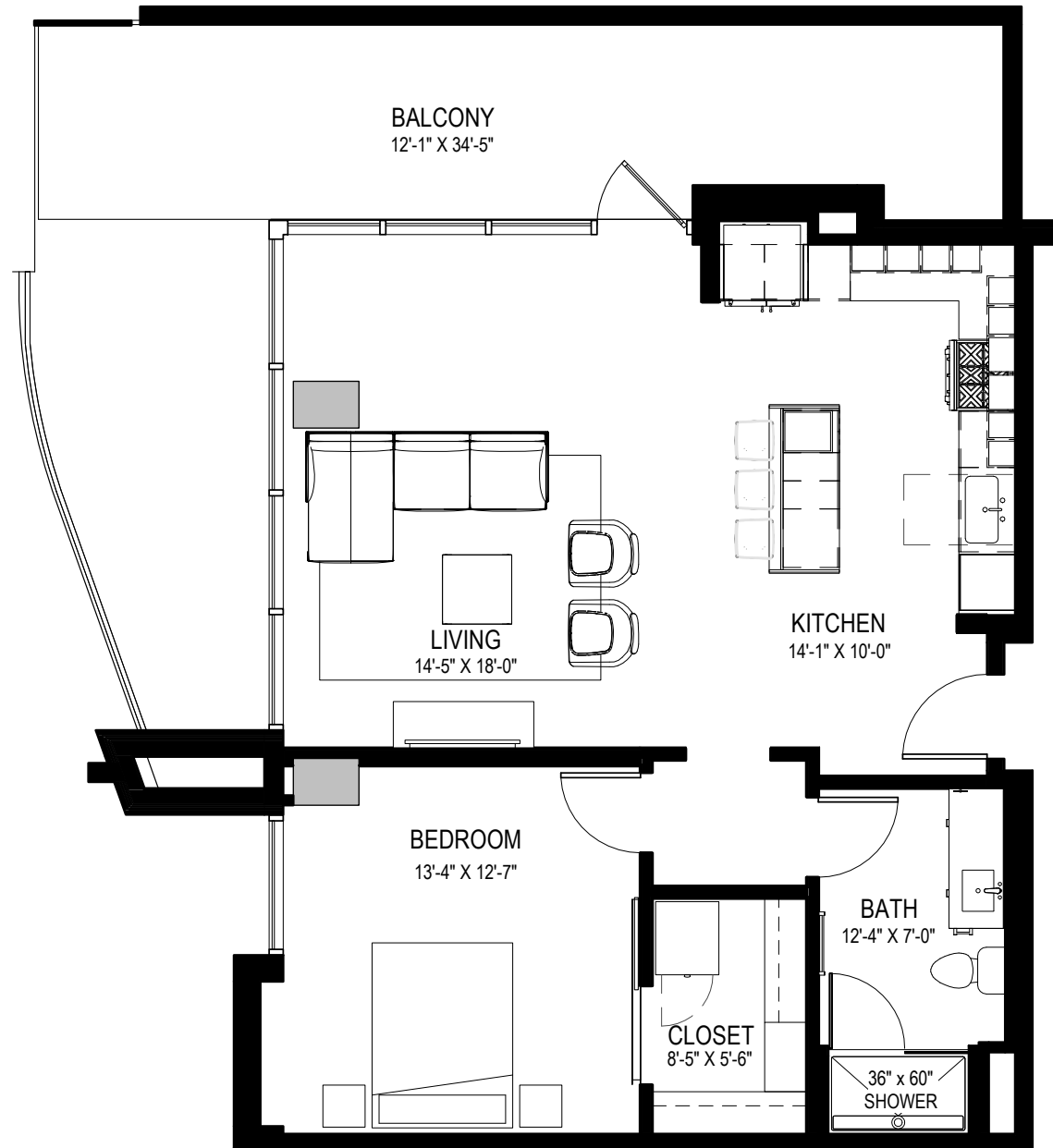
APARTMENT FEATURES

- Floor-to-ceiling windows frame skyline and mountain views
- Quartz counter tops and stainless steel appliances with chef-inspired gas range
- European-style custom cabinetry
- Large walk-in closets with custom wood shelving*
- Wood style flooring throughout
- Contemporary lighting and ceiling fans
- Full size washer and dryer in all residences
- Private patios or balconies with modern, glass railing*

*In select residences



LEVEL 11



All dimensions and square footage are approximate and are subject to change. Illustrations are artist's conception and not reproductions of original plans. Please consult Community Sales Manager for details. 11.01.2020

A9.2

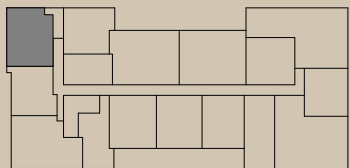
1 BED / 1 BATH
912 SQ. FT.

ADELINE
LUXURY LIVING

APARTMENT FEATURES

- Floor-to-ceiling windows frame skyline and mountain views
- Quartz counter tops and stainless steel appliances with chef-inspired gas range
- European-style custom cabinetry
- Large walk-in closets with custom wood shelving*
- Wood style flooring throughout
- Contemporary lighting and ceiling fans
- Full size washer and dryer in all residences
- Private patios or balconies with modern, glass railing*

*In select residences



LEVELS 12 THRU 25



All dimensions and square footage are approximate and are subject to change. Illustrations are artist's conception and not reproductions of original plans. Please consult Community Sales Manager for details. 11.01.2020

A10.1

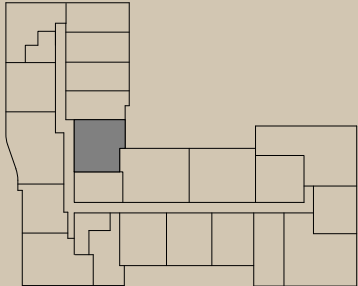
1 BED / 1 BATH
925 SQ. FT.

ADELINE
LUXURY LIVING

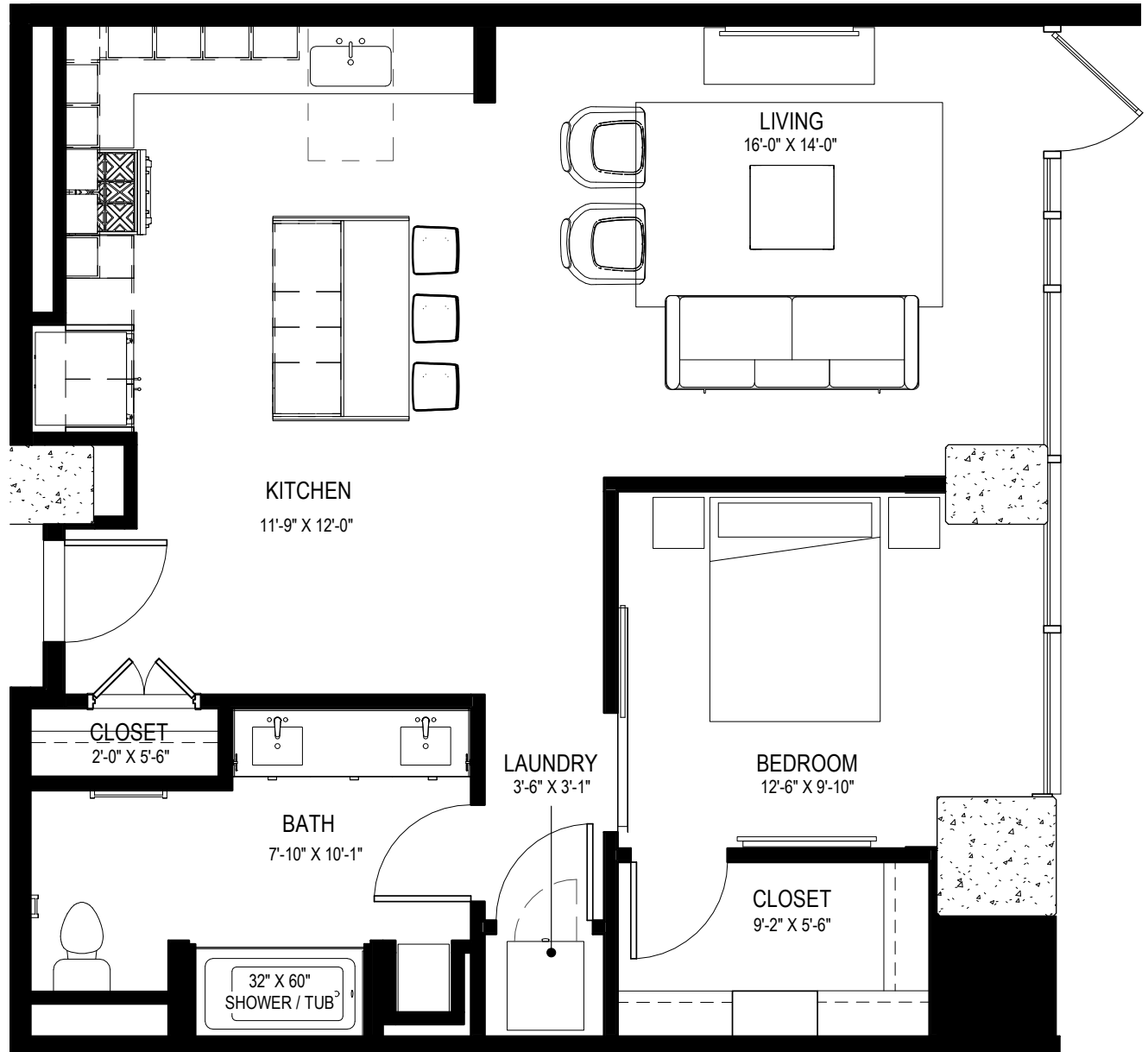
APARTMENT FEATURES

- Floor-to-ceiling windows frame skyline and mountain views
- Quartz counter tops and stainless steel appliances with chef-inspired gas range
- European-style custom cabinetry
- Large walk-in closets with custom wood shelving*
- Wood style flooring throughout
- Contemporary lighting and ceiling fans
- Full size washer and dryer in all residences
- Private patios or balconies with modern, glass railing*

*In select residences



LEVEL 2



All dimensions and square footage are approximate and are subject to change. Illustrations are artist's conception and not reproductions of original plans. Please consult Community Sales Manager for details. 11.01.2020

A10.2

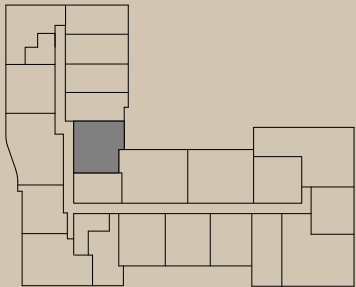
1 BED / 1 BATH
968 SQ. FT.

ADELINE
LUXURY LIVING

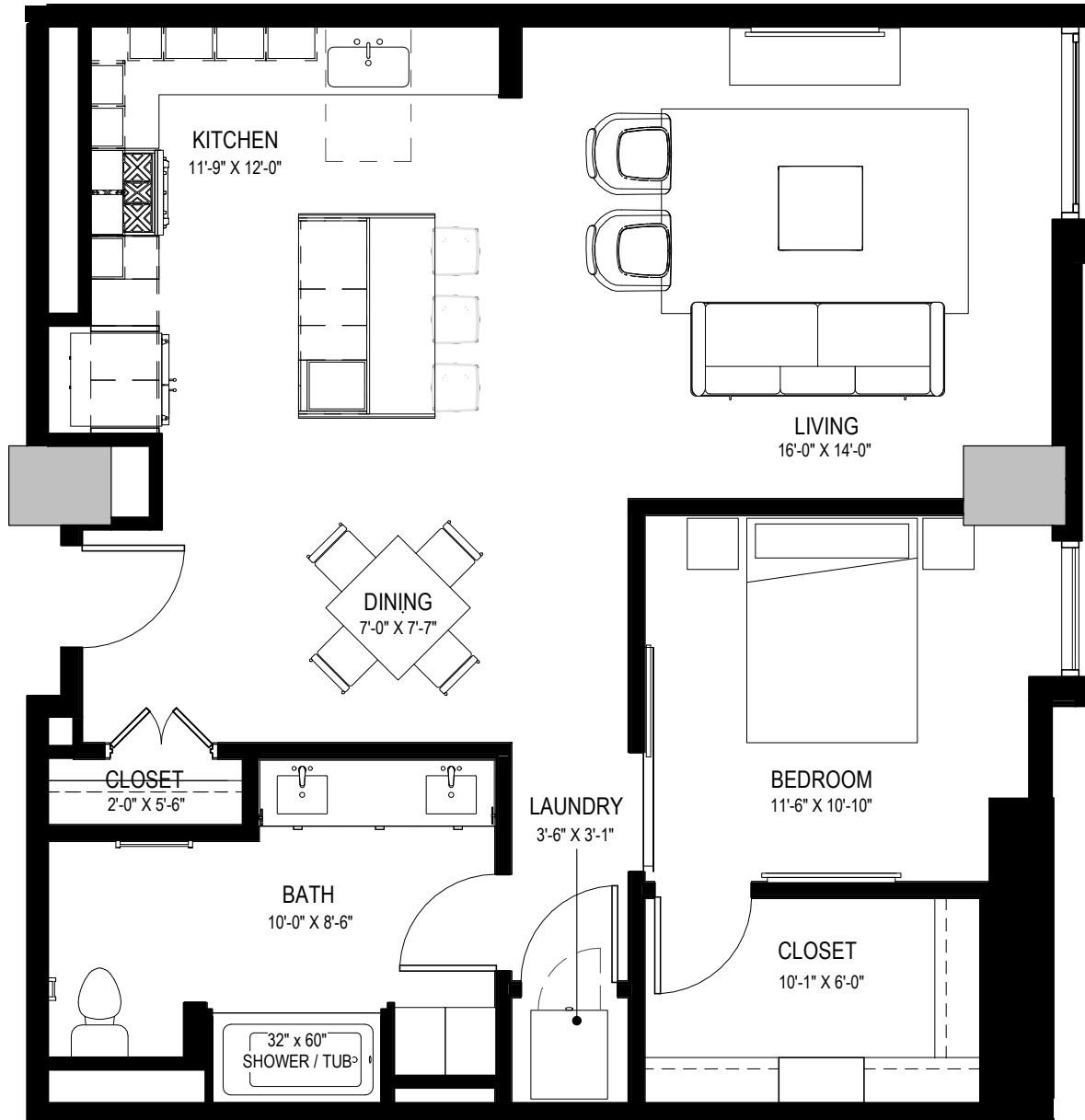
APARTMENT FEATURES

- Floor-to-ceiling windows frame skyline and mountain views
- Quartz counter tops and stainless steel appliances with chef-inspired gas range
- European-style custom cabinetry
- Large walk-in closets with custom wood shelving*
- Wood style flooring throughout
- Contemporary lighting and ceiling fans
- Full size washer and dryer in all residences
- Private patios or balconies with modern, glass railing*

*In select residences



LEVELS 3 THRU 10



All dimensions and square footage are approximate and are subject to change. Illustrations are artist's conception and not reproductions of original plans. Please consult Community Sales Manager for details. 11.01.2020

GA1

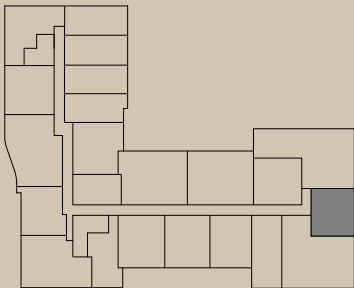
1 BED / 1 BATH
768 SQ. FT.

ADELINE
LUXURY LIVING

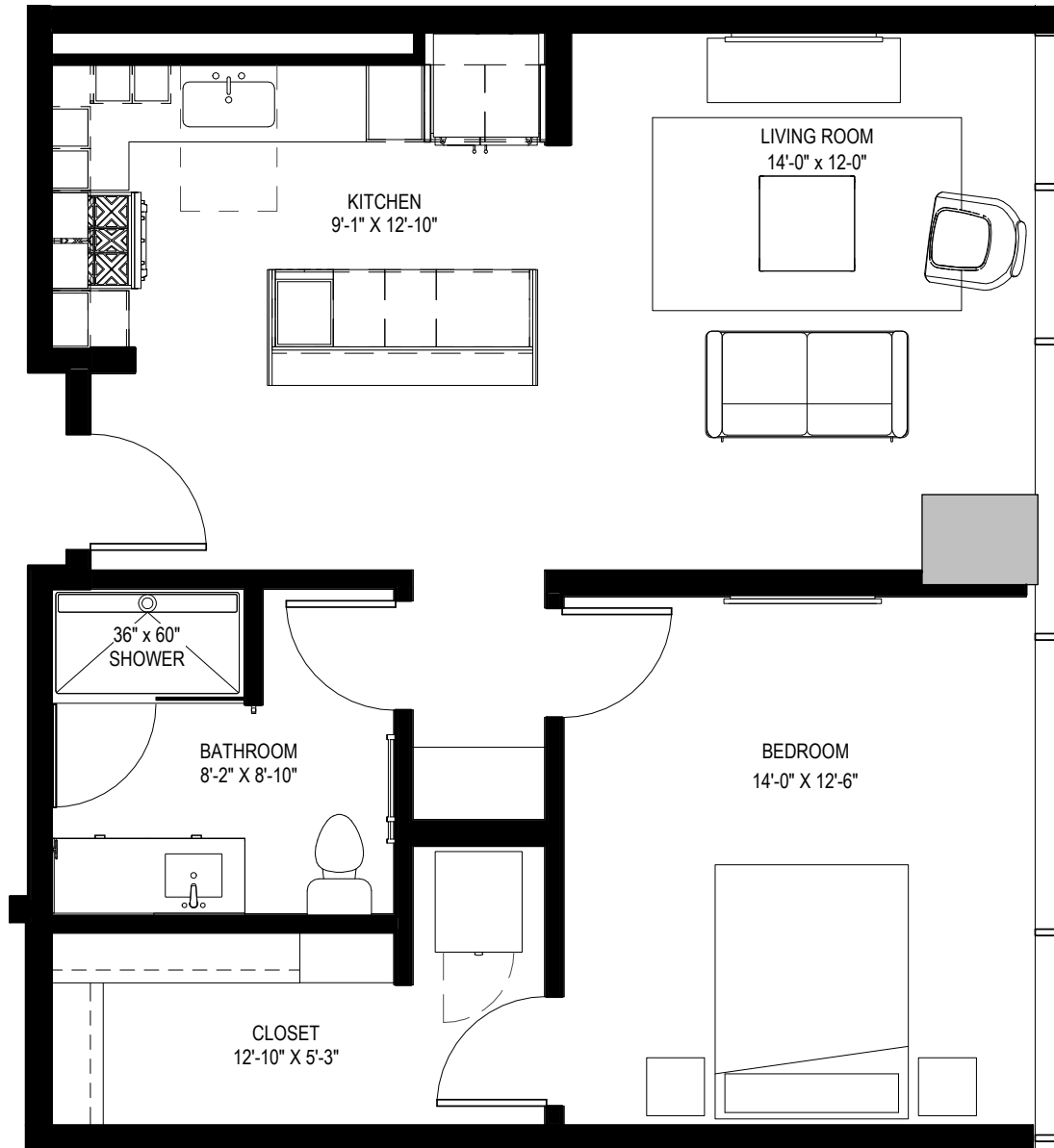
APARTMENT FEATURES

- Floor-to-ceiling windows frame skyline and mountain views
- Quartz counter tops and stainless steel appliances with chef-inspired gas range
- European-style custom cabinetry
- Large walk-in closets with custom wood shelving*
- Wood style flooring throughout
- Contemporary lighting and ceiling fans
- Full size washer and dryer in all residences
- Private patios or balconies with modern, glass railing*

*In select residences



LEVEL 2



All dimensions and square footage are approximate and are subject to change. Illustrations are artist's conception and not reproductions of original plans. Please consult Community Sales Manager for details. 11.01.2020

B1.1

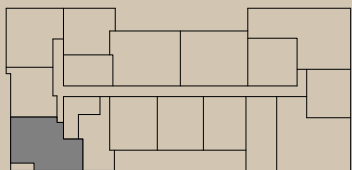
2 BED / 2.5 BATH
1,174 SQ. FT.

ADELINE
LUXURY LIVING

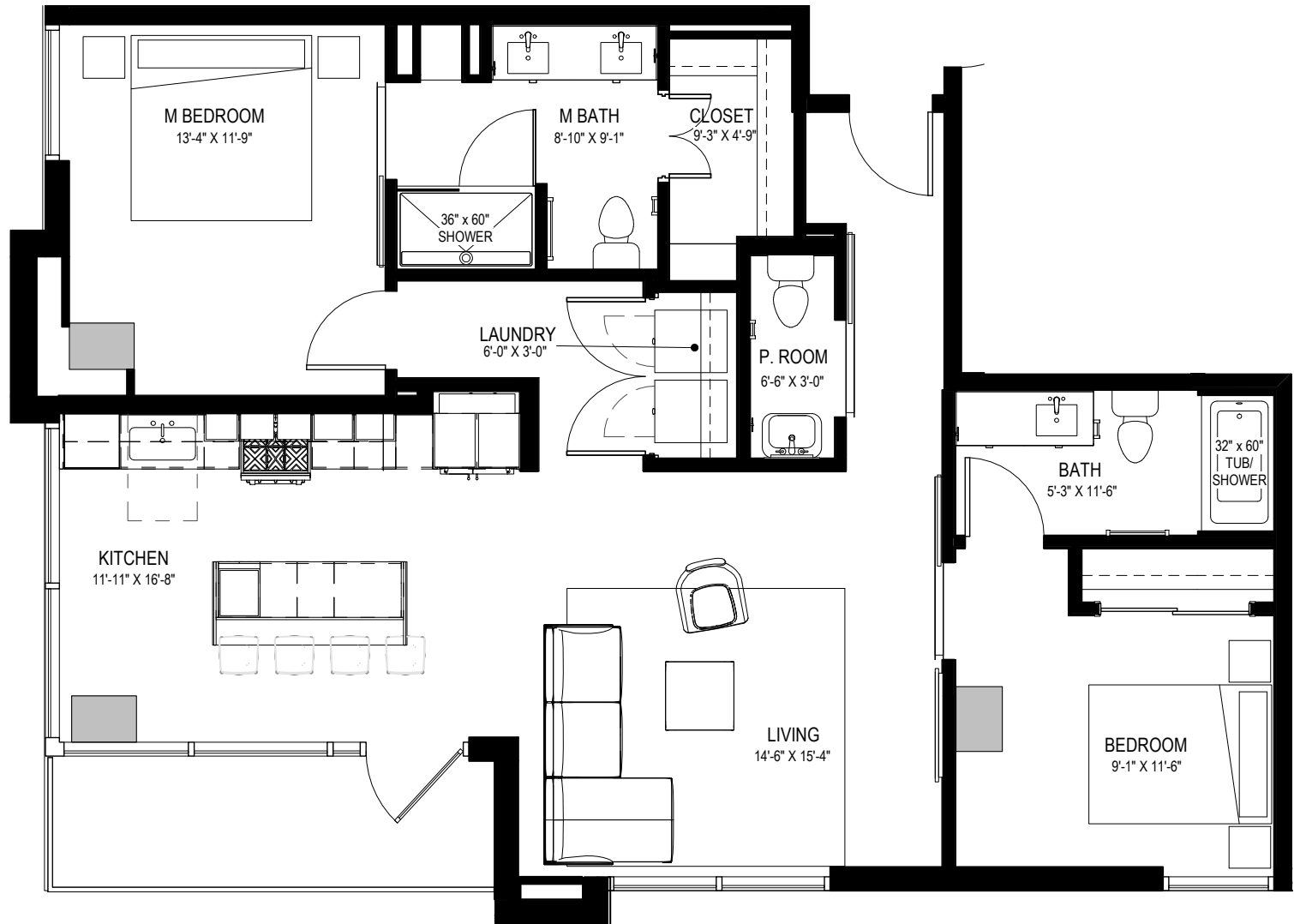
APARTMENT FEATURES

- Floor-to-ceiling windows frame skyline and mountain views
- Quartz counter tops and stainless steel appliances with chef-inspired gas range
- European-style custom cabinetry
- Large walk-in closets with custom wood shelving*
- Wood style flooring throughout
- Contemporary lighting and ceiling fans
- Full size washer and dryer in all residences
- Private patios or balconies with modern, glass railing*

*In select residences



LEVELS 11 THRU 25



All dimensions and square footage are approximate and are subject to change. Illustrations are artist's conception and not reproductions of original plans. Please consult Community Sales Manager for details. 11.01.2020

B1.2

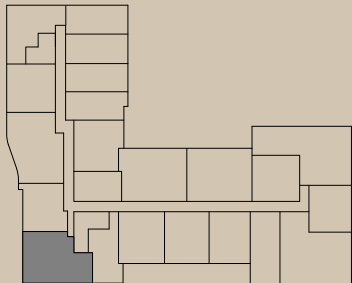
2 BED / 2.5 BATH
1,256 SQ. FT.

ADELINE
LUXURY LIVING

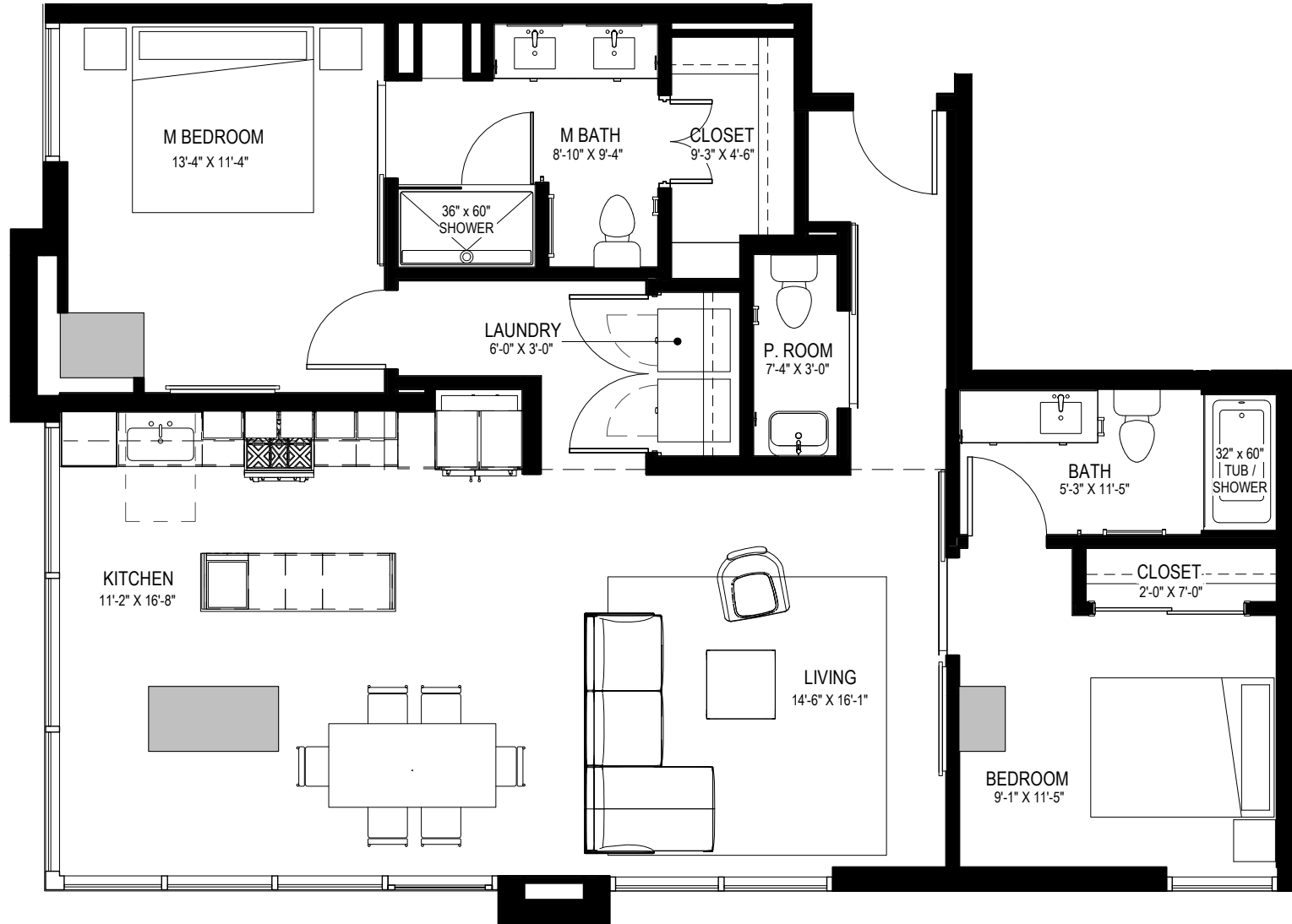
APARTMENT FEATURES

- Floor-to-ceiling windows frame skyline and mountain views
- Quartz counter tops and stainless steel appliances with chef-inspired gas range
- European-style custom cabinetry
- Large walk-in closets with custom wood shelving*
- Wood style flooring throughout
- Contemporary lighting and ceiling fans
- Full size washer and dryer in all residences
- Private patios or balconies with modern, glass railing*

*In select residences



LEVELS 3 THRU 10



All dimensions and square footage are approximate and are subject to change. Illustrations are artist's conception and not reproductions of original plans. Please consult Community Sales Manager for details. 11.01.2020

B2

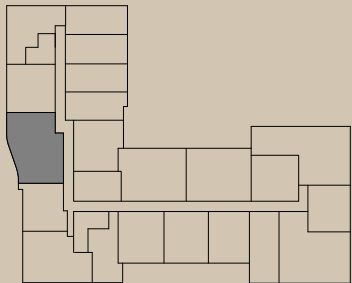
2 BED / 2 BATH
1,321 SQ. FT.

ADELINE
LUXURY LIVING

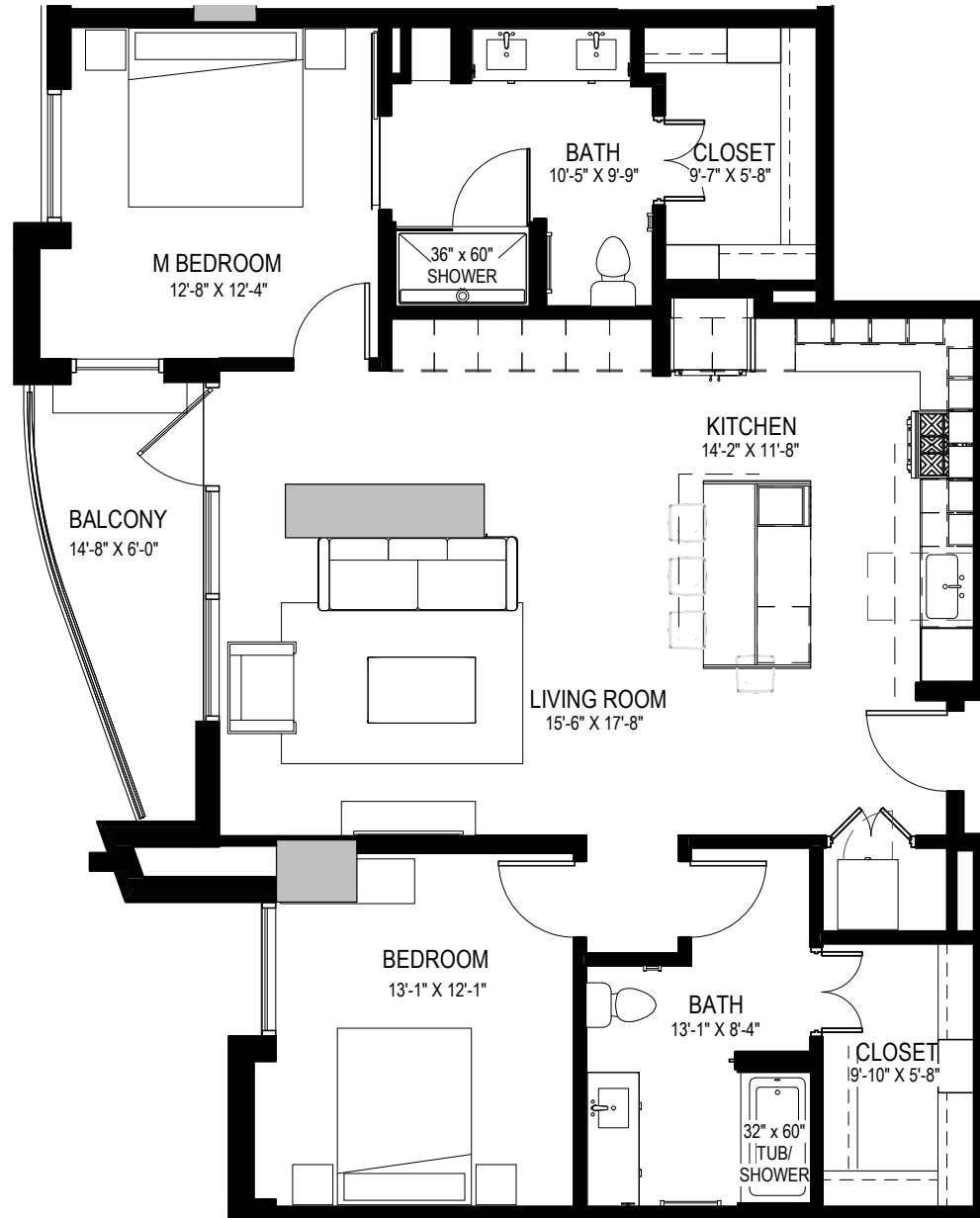
APARTMENT FEATURES

- Floor-to-ceiling windows frame skyline and mountain views
- Quartz counter tops and stainless steel appliances with chef-inspired gas range
- European-style custom cabinetry
- Large walk-in closets with custom wood shelving*
- Wood style flooring throughout
- Contemporary lighting and ceiling fans
- Full size washer and dryer in all residences
- Private patios or balconies with modern, glass railing*

*In select residences



LEVELS 3 THRU 10



All dimensions and square footage are approximate and are subject to change. Illustrations are artist's conception and not reproductions of original plans. Please consult Community Sales Manager for details. 11.01.2020

B3.1

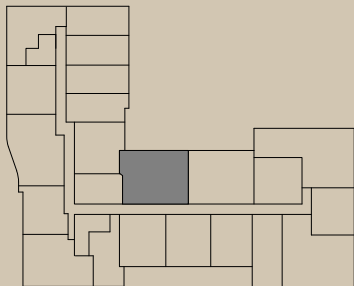
2 BED / 2 BATH
1,364 SQ. FT.

ADELINE
LUXURY LIVING

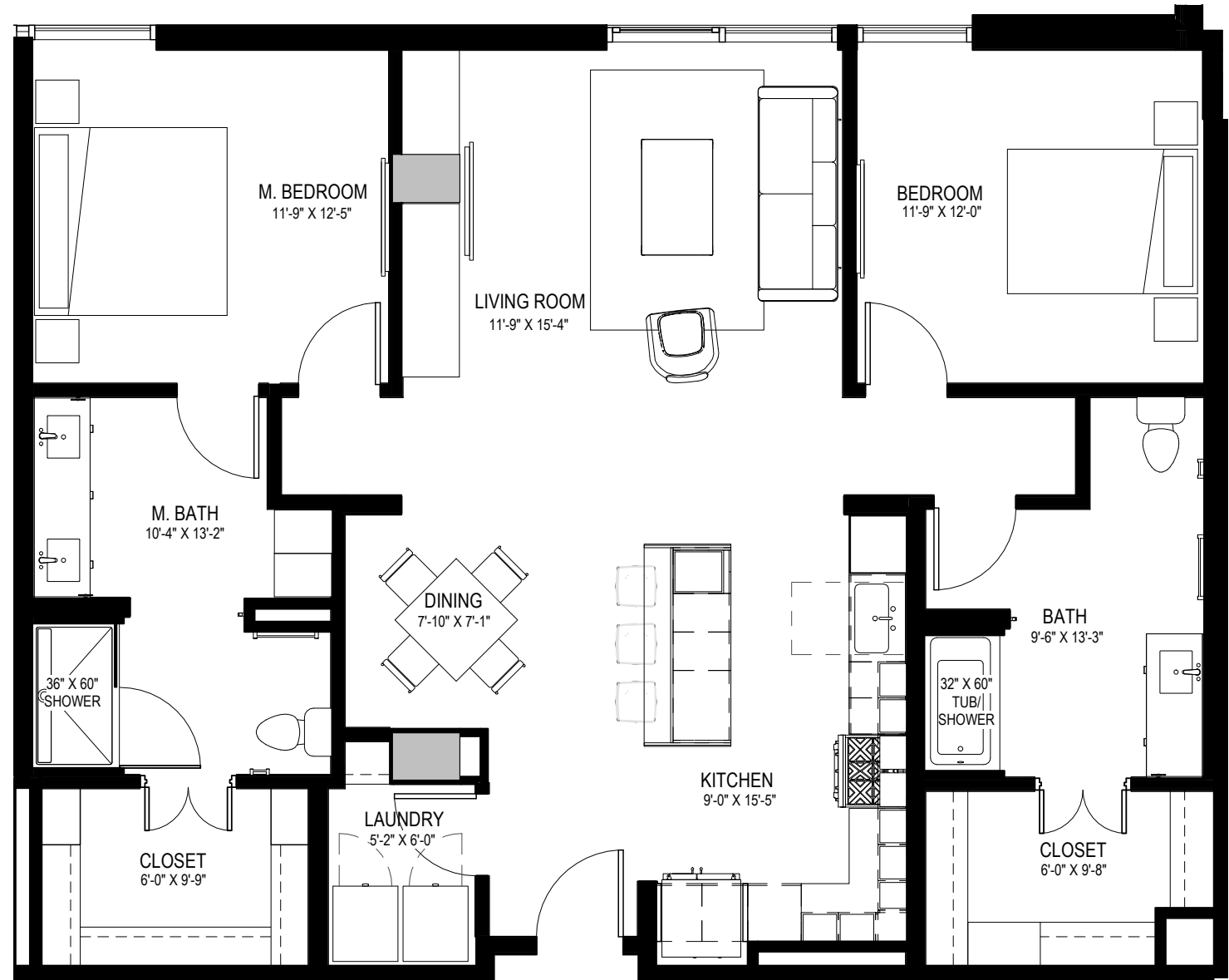
APARTMENT FEATURES

- Floor-to-ceiling windows frame skyline and mountain views
- Quartz counter tops and stainless steel appliances with chef-inspired gas range
- European-style custom cabinetry
- Large walk-in closets with custom wood shelving*
- Wood style flooring throughout
- Contemporary lighting and ceiling fans
- Full size washer and dryer in all residences
- Private patios or balconies with modern, glass railing*

*In select residences



LEVELS 3 THRU 25



All dimensions and square footage are approximate and are subject to change. Illustrations are artist's conception and not reproductions of original plans. Please consult Community Sales Manager for details. 11.01.2020

B3.2

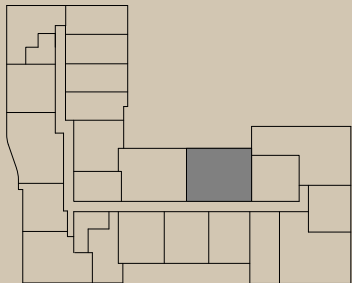
2 BED / 2 BATH
1,370 SQ. FT.

ADELINE
LUXURY LIVING

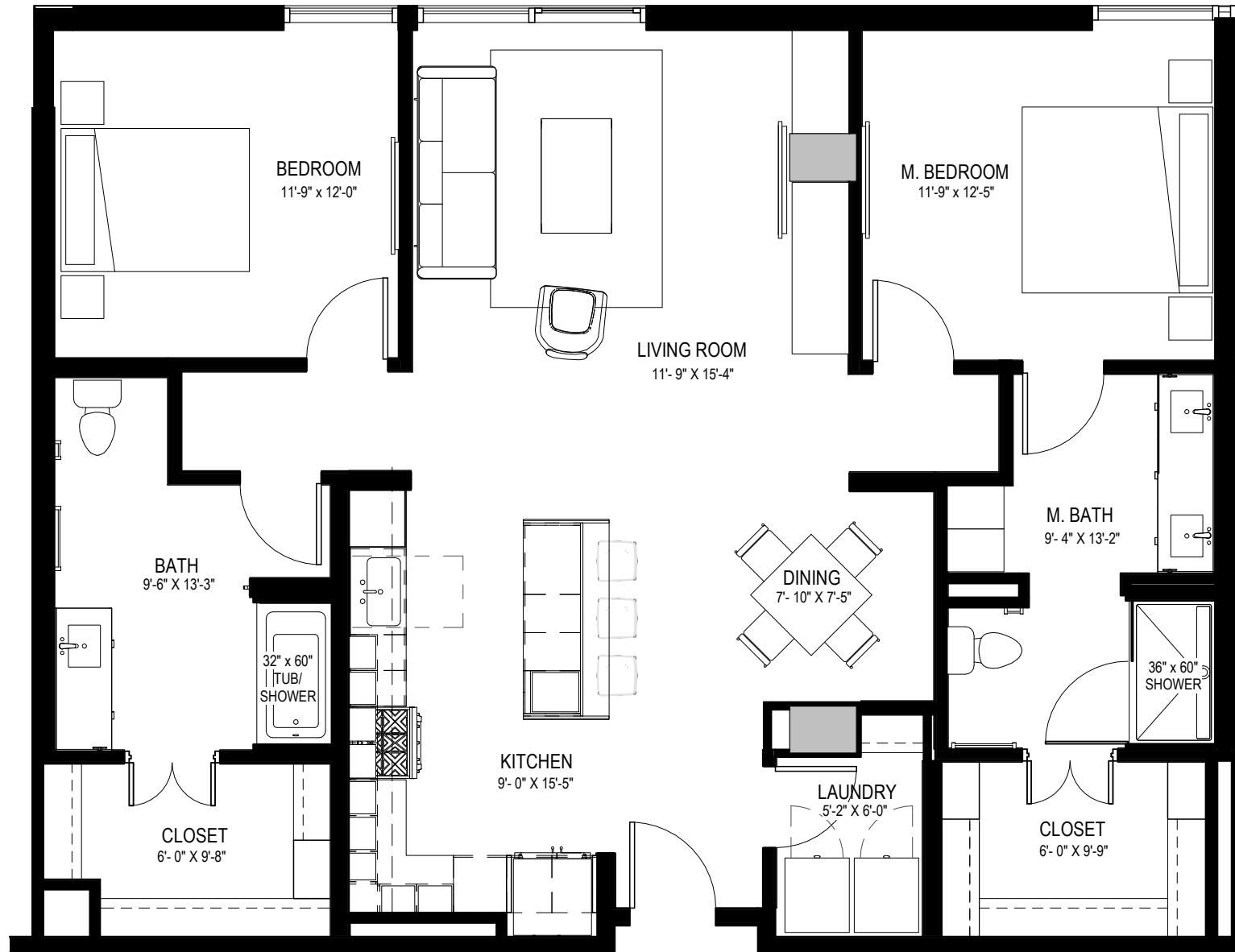
APARTMENT FEATURES

- Floor-to-ceiling windows frame skyline and mountain views
- Quartz counter tops and stainless steel appliances with chef-inspired gas range
- European-style custom cabinetry
- Large walk-in closets with custom wood shelving*
- Wood style flooring throughout
- Contemporary lighting and ceiling fans
- Full size washer and dryer in all residences
- Private patios or balconies with modern, glass railing*

*In select residences



LEVELS 3 THRU 25



All dimensions and square footage are approximate and are subject to change. Illustrations are artist's conception and not reproductions of original plans. Please consult Community Sales Manager for details. 11.01.2020

B4.1

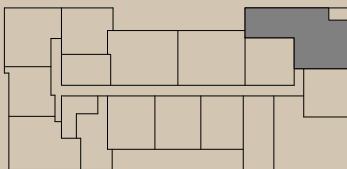
2 BED / 2.5 BATH
1,516 SQ. FT.

ADELINE
LUXURY LIVING

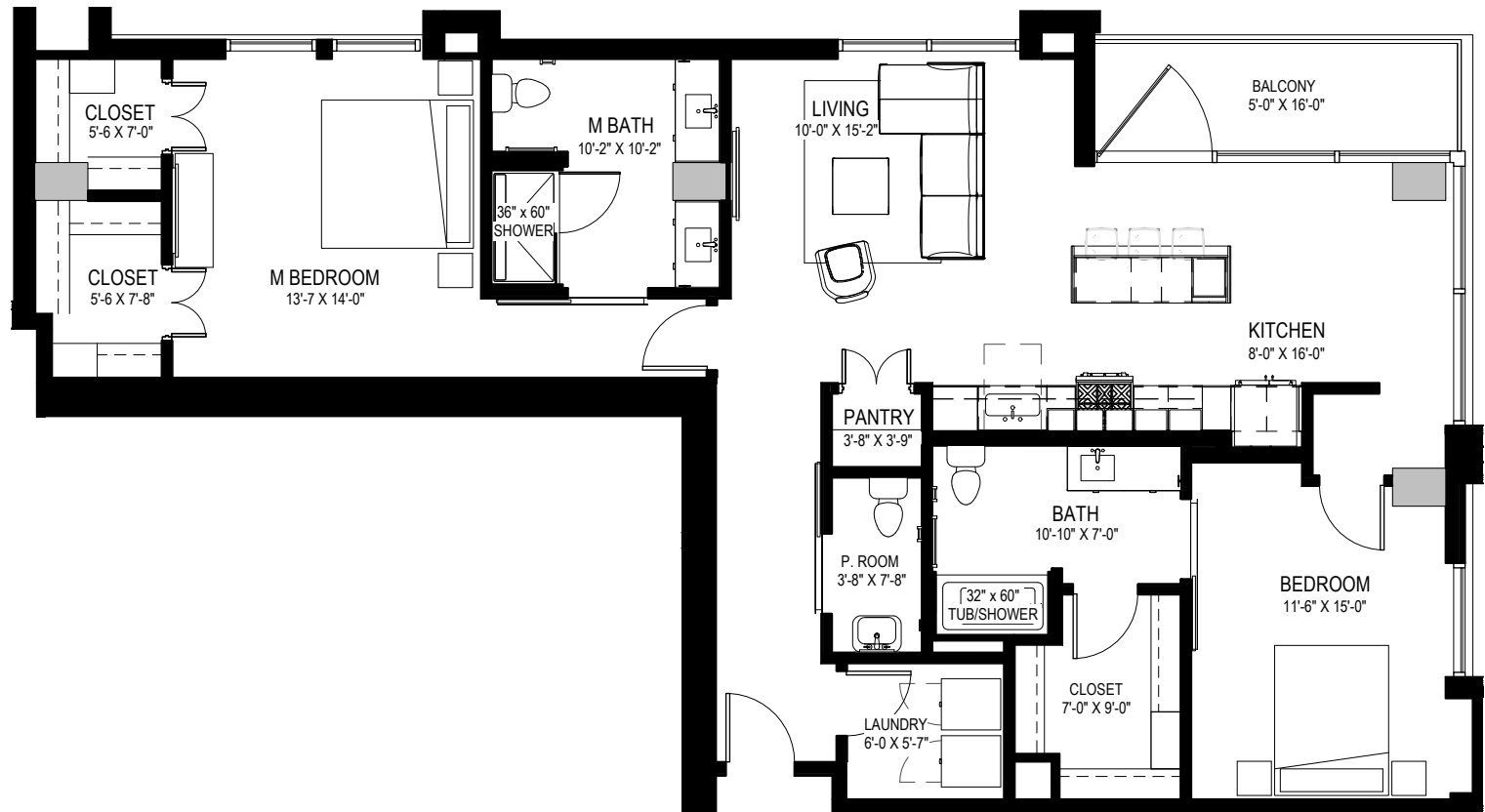
APARTMENT FEATURES

- Floor-to-ceiling windows frame skyline and mountain views
- Quartz counter tops and stainless steel appliances with chef-inspired gas range
- European-style custom cabinetry
- Large walk-in closets with custom wood shelving*
- Wood style flooring throughout
- Contemporary lighting and ceiling fans
- Full size washer and dryer in all residences
- Private patios or balconies with modern, glass railing*

*In select residences



LEVELS 11 THRU 25



All dimensions and square footage are approximate and are subject to change. Illustrations are artist's conception and not reproductions of original plans. Please consult Community Sales Manager for details. 11.01.2020

B4.2

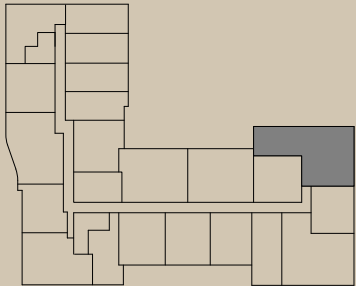
2 BED / 2.5 BATH
1,597 SQ. FT.

ADELINE
LUXURY LIVING

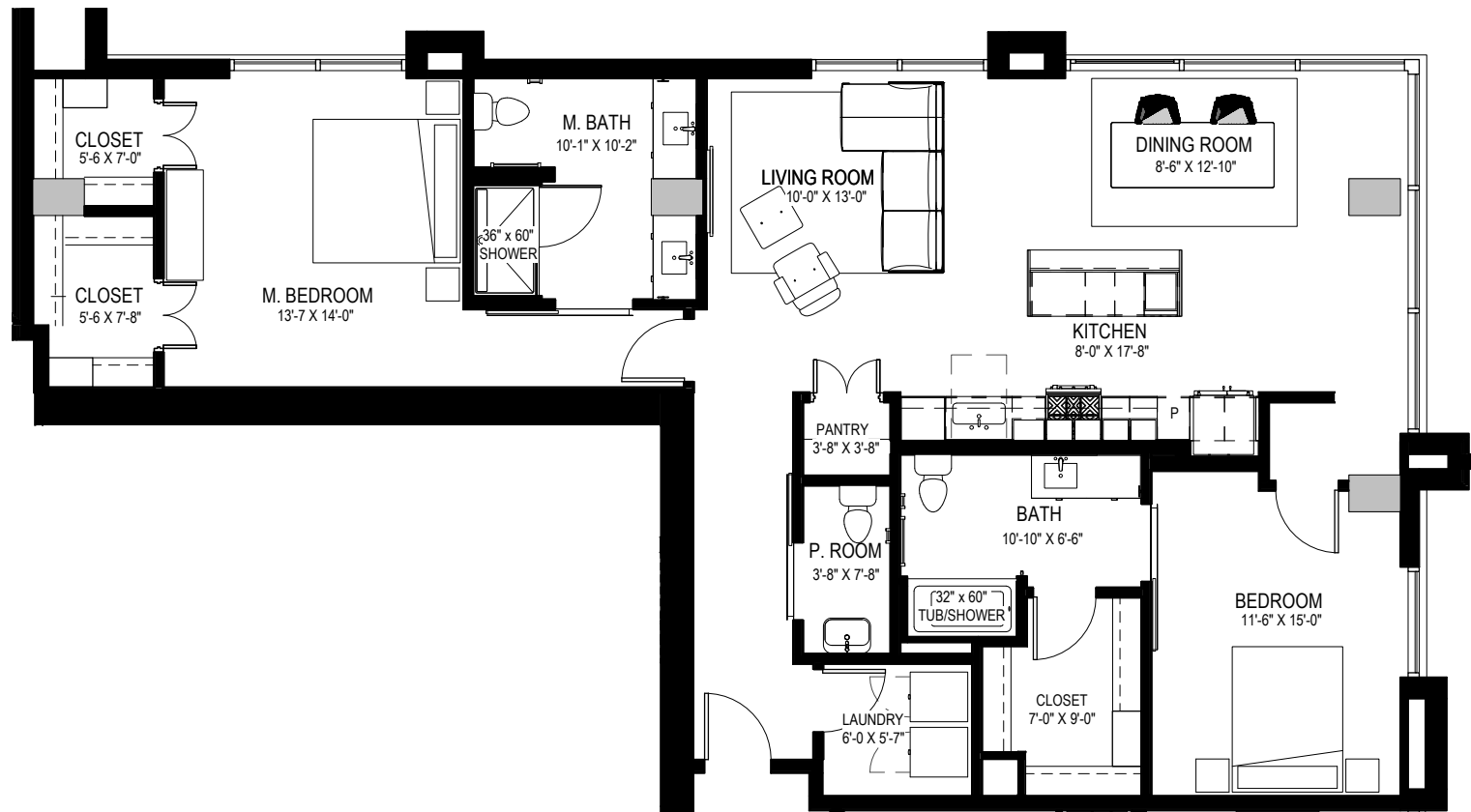
APARTMENT FEATURES

- Floor-to-ceiling windows frame skyline and mountain views
- Quartz counter tops and stainless steel appliances with chef-inspired gas range
- European-style custom cabinetry
- Large walk-in closets with custom wood shelving*
- Wood style flooring throughout
- Contemporary lighting and ceiling fans
- Full size washer and dryer in all residences
- Private patios or balconies with modern, glass railing*

*In select residences



LEVELS 3 THRU 10



All dimensions and square footage are approximate and are subject to change. Illustrations are artist's conception and not reproductions of original plans. Please consult Community Sales Manager for details. 11.01.2020

B5.1

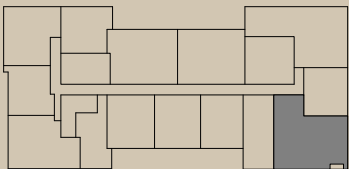
2 BED / 2.5 BATH
1,528 SQ. FT.

ADELINE
LUXURY LIVING

APARTMENT FEATURES

- Floor-to-ceiling windows frame skyline and mountain views
- Quartz counter tops and stainless steel appliances with chef-inspired gas range
- European-style custom cabinetry
- Large walk-in closets with custom wood shelving*
- Wood style flooring throughout
- Contemporary lighting and ceiling fans
- Full size washer and dryer in all residences
- Private patios or balconies with modern, glass railing*

*In select residences



LEVELS 11 THRU 25



All dimensions and square footage are approximate and are subject to change. Illustrations are artist's conception and not reproductions of original plans. Please consult Community Sales Manager for details. 11.01.2020

B5.2

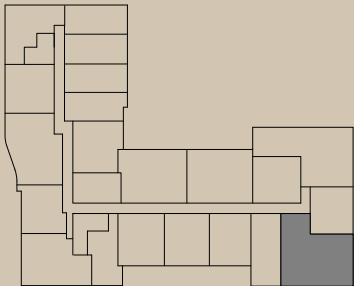
2 BED / 2.5 BATH
1,586 SQ. FT.

ADELINE
LUXURY LIVING

APARTMENT FEATURES

- Floor-to-ceiling windows frame skyline and mountain views
- Quartz counter tops and stainless steel appliances with chef-inspired gas range
- European-style custom cabinetry
- Large walk-in closets with custom wood shelving*
- Wood style flooring throughout
- Contemporary lighting and ceiling fans
- Full size washer and dryer in all residences
- Private patios or balconies with modern, glass railing*

*In select residences



LEVELS 3 THRU 10

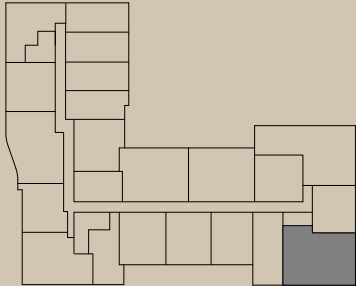


All dimensions and square footage are approximate and are subject to change. Illustrations are artist's conception and not reproductions of original plans. Please consult Community Sales Manager for details. 11.01.2020

APARTMENT FEATURES

- Floor-to-ceiling windows frame skyline and mountain views
- Quartz counter tops and stainless steel appliances with chef-inspired gas range
- European-style custom cabinetry
- Large walk-in closets with custom wood shelving*
- Wood style flooring throughout
- Contemporary lighting and ceiling fans
- Full size washer and dryer in all residences
- Private patios or balconies with modern, glass railing*

*In select residences



LEVEL 2



GB2

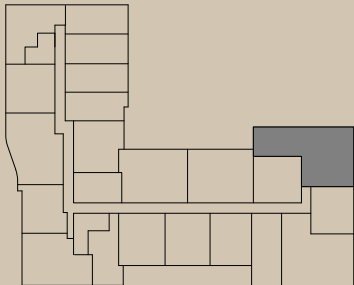
2 BED / 2.5 BATH
1,521 SQ. FT.

ADELINE
LUXURY LIVING

APARTMENT FEATURES

- Floor-to-ceiling windows frame skyline and mountain views
- Quartz counter tops and stainless steel appliances with chef-inspired gas range
- European-style custom cabinetry
- Large walk-in closets with custom wood shelving*
- Wood style flooring throughout
- Contemporary lighting and ceiling fans
- Full size washer and dryer in all residences
- Private patios or balconies with modern, glass railing*

*In select residences



LEVEL 2



All dimensions and square footage are approximate and are subject to change. Illustrations are artist's conception and not reproductions of original plans. Please consult Community Sales Manager for details. 11.01.2020